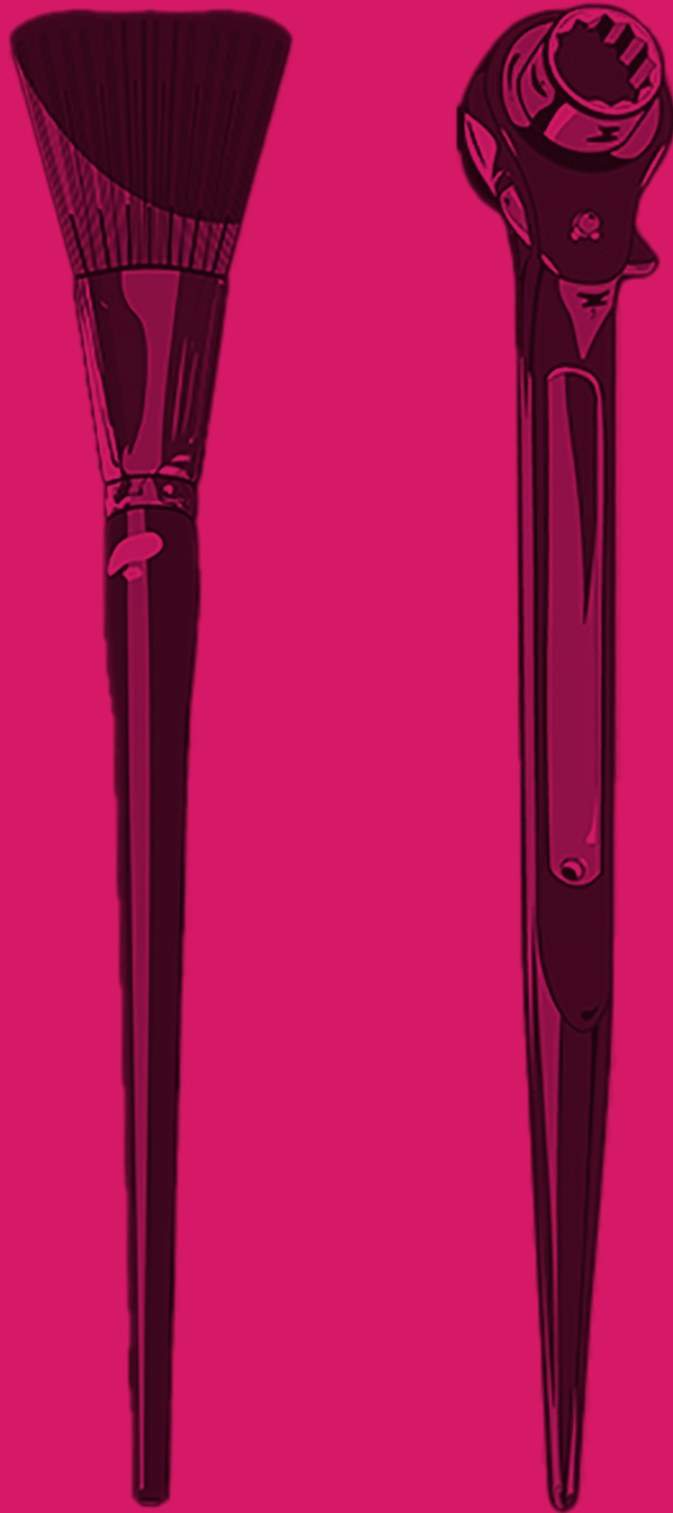


# Propmaking Materials



# FLINTS

*The one-stop-shop that delivers to your door*

## PAPER ROPE

### Paper Rope

A versatile material mainly manufactured to act as a former during glass fibre laminations. Once glassed over it will provide stiffening ribs to the structure. However, it has many other uses. Use it to create curved mouldings, to add texture and bulk to trees and branches, and to add relief to any surface. It can be flame retarded with Flamebar type S1WA2 [page 78] and textured with Idenden Brushcote or Flints Mud [page 51]. We have heard it is also used for pyrotechnic fuses. All lengths listed are approximate coil lengths.



code	diameter	per m
PRO120	6.5mm	£0.30
PRO121	13.8mm	£0.62
PRO122	18mm	£0.98
PRO123	25.5mm	£1.54
PRO124	40mm	£2.89
PRO125	55mm	£4.60

code	length (approx.)	diameter	per coil	10+
PRO120D	200m	6.5mm	£32.05	£20.14
PRO121D	250m	13.8mm	£107.93	£90.68
PRO122D	100m	18mm	£76.20	£53.65
PRO123D	100m	25.5mm	£117.25	£98.13
PRO124D	40m	40mm	£86.17	£70.40
PRO125D	25m	55mm	£85.88	£70.49

### Wired Paper Rope

A few years ago we used to sell a wired sisal rope but just as it got popular the manufacturers stopped making it! We now stock two sizes of wired paper rope. The addition of a stiff wire makes it the perfect choice for undergrowth, foliage and tree effects. The paper rope can be flame retarded with Flamebar type S1WA2 [page 78]. It can be directly painted or textured with Idenden Brushcote or Flints Mud [page 51] or it can be scrimmed with muslin [page 154]. "Branches" and "twigs" can be bound together using unbleached cloth tape [page 293]. Further strength can be added, where needed, by binding the paper rope to aluminium armature wire. A piece of wired paper rope will generally support its own weight over about 2 - 3 ft before drooping. All lengths listed are approximate coil lengths.



code	diameter	per m
PRO121W	13.8mm	£0.93
PRO122W	18mm	£1.43

code	length (approx.)	diameter	per coil	10+
PRO121WD	250m	13.8mm	£188.16	£151.58
PRO122WD	100m	18mm	£129.36	£116.42

## GALVANISED SINGLE STRAND WIRE [SENTINEL]

### Galvanised Single Strand Wire

An economical wire for binding and forming small armatures. 500 g and 10 kg coils. Also called Sentinel Wire. For softer wire choose the aluminium armature wire listed below. See also wired paper rope.



code	weight	length (approx.)	diameter	price
WIR060	500g	161m	0.71mm	£3.85
WIR061	500g	100m	0.9mm	£3.75
WIR063	500g	81m	1mm	£4.55
WIR065	500g	51.9m	1.25mm	£3.52
WIR067	500g	31.6m	1.6mm	£3.40
WIR069	500g	20.3m	2mm	£3.30
WIR075	5kg	130m	2.5mm	£30.88
WIR076	10kg	407m	2mm	£54.25
WIR078	10kg	164.1m	3.15mm	£57.05

## ALUMINIUM ARMATURE WIRES

### Round Aluminium Armature Wire

This popular wire is easy to work, enabling rustproof armatures to be constructed at great speed. Ideal for animation. It also has decorative uses such as imitation silver binding on sword handles and representing climbing plants. The 0.7 mm x 30 m wire is now sold in 3 x 10 m coils.



code	length	diameter	price	10+
ARM15	17m	1.5mm	£7.15	£6.43
ARM20	9m	2mm	£7.58	£6.82
ARM32	10m	3.2mm	£11.04	£9.93
ARM40	3m	4mm	£7.33	£6.59
ARM50	3.75m	5mm	£7.98	£7.18
ARM60	2.5m	6mm	£8.22	£8.97
ARM80	3m	8mm	£16.28	£14.65
ARM100	3m	10mm	£22.55	£20.30

### Square Section Aluminium Armature Wire

We stock a range of square section soft aluminium armature wires for those who prefer using square to round! For Mod Mesh see page 112, for tin snips and shears see page 329.



code	length	square	price
ARM318S	5m	3.18mm	£7.92
ARM475S	5m	4.75mm	£15.08
ARM635S	3m	6.35mm	£19.98
ARM953S	3m	9.53mm	£23.98

# PROPMAKER'S MATERIALS

## Coloured Aluminium Armature Wire

Excellent for decorative work. Often used for floral displays. Also available as a mixed pack of 5 rolls. Fantastic value! For Mod Mesh see page 112.



code	Colour	length	diameter	price
ARM02N	Black	12m	2mm	£3.90
ARM02R	Red	12m	2mm	£3.90
ARM02P	Pink	12m	2mm	£3.90
ARM02GR	Green	12m	2mm	£3.90
ARM02G	Gold	12m	2mm	£3.90
ARM02K	Mixed pack of 5 rolls	12m	2mm	£17.00

## PLASTIC BARBED WIRE



Plastic barbed wire in situ; Not About Heroes, 2014. Theatr Clywd, Director: Tim Baker, Designer: Mark Bailey, Wilfred Owen played by Owin Gwynn, Photo@Catherine Ashmore



## Plastic Barbed Wire

A safer version of the real thing; the barbs are plastic, but the wire is real! Almost indistinguishable from actual barbed wire, this is the ideal prop for creating evocative war or industrial scenes for film or theatre. (For an authentic war scene consider also using Flints Mud [page 51]). Supplied in a coil, the wire can be easily manipulated [please take care when opening the coils]. Spare plastic barbs are also available to make your barbed wire last longer, sold in packs of 10.

code	description	length	price	10+	100+
PROPBW05		5m	£16.50		
PROPBW30		10m	£79.00	£70.90	
PROPBWS	Spare Barbs [pack of 10]		£2.50	£2.20	£1.80

## HESSIAN BAGS

### Hessian Bag

These hessian bags are ideal to complete a wartime or disaster scene. The bags are supplied empty but that doesn't make a very interesting photo so we filled one with Foam Crumbs [page 54] to replicate an authentic but lightweight sandbag. For exterior shoots see Smoke Grenades page 119.



code	description	length	depth	price
PROCATBAG	Empty	800mm	330mm	£1.95

## SELF-ADHESIVE WINDOW LEAD TAPE

### Window Lead Tape

A self-adhesive lead tape for creating stain glass windows. Use with French Enamel Varnish. To darken and give an aged effect use Regasheen.



Glass window with self-adhesive lead and painted with Hatolite

code	width	length	price
TAP161	4.5mm	50m	£16.39
TAP162	6mm	50m	£17.54
TAP163	9mm	50m	£22.50
TAP164	12mm	50m	£31.00

### Regasheen Plus

Use Regasheen, a special waterbased product, to produce an aged effect on lead window tape.

code	volume	price
TAP165N	250ml	£13.00

## FOAM CLAY

### Foam Clay

Lightweight, air drying, foamy gloopy clay. Great for adding details to EVA or Plastazote foams or just to cover up untidy seams! Available in Black or White to match your foam. Please note: this is an air drying clay, so it does take time to fully dry out (overnight if the sculpted piece has more than 10mm depth), if not formed around an armature. Gravity can take its toll so it's important to be supportive while it takes its time to become its' true authentic self.



code	Colour	weight	price
PROFOAMCLAYBLK	Black	300g	£11.80
PROFOAMCLAYWHT	White	300g	£11.80



## PLASTICINE

### Plasticine

Simple to use, non-toxic, modelling medium. Available in a range of colours. Easy to shape. It can be used, and re-used for every modelling job.

NEW



code	Colour	weight	price
PROSCCBK	Black	500g	£2.98
PROSCCBN	Brown	500g	£2.98
PROSCCDB	Dark Blue	500g	£2.98
PROSCCGN	Green	500g	£2.98
PROSCCGY	Grey	500g	£2.98
PROSCCOE	Orange	500g	£2.98
PROSCCPE	Purple	500g	£2.98
PROSCCRD	Red	500g	£2.98
PROSCCWE	White	500g	£2.98
PROSCCYW	Yellow	500g	£2.98

## SUPERSCULPEY

### SuperSculpey

A polymer clay that stays soft and malleable until baking. Ideal for use in animation, prototypes, mould making and sculpture. Super Sculpy Original is available in semi-translucent beige and has a ceramic-like feel to work with. Can achieve fine tooling and detail without the clay filling in and can be reworked numerous times. Also available in a firm grey coloured version, most suited to working on minuscule and realistic features or where you are after a higher-level detail and complexity. Is more firm than the original both before and after curing. Both clays are cured by oven baking at 130° C, well within the range of a domestic oven. After curing in the oven, Super Sculpey can be further worked into through sanding, drilling, carving and painting with water-based acrylic paints.



code	Colour	weight	price
PROSS1	Original Beige	454g	£15.15
PROSS2	Firm Grey	454g	£15.15

## PLASTILIN

### Plastilin

A high quality waxbased modelling material with the smooth consistency of clay but does not dry out so it can be used over and over again.



code	Colour	weight	price
PROPLS	Standard Grade [ivory]	1kg	£7.98
PROPLH	Hard Grade [grey]	1kg	£7.98

## MILLIPUT

### Milliput

Extremely versatile two-part putty. When the two parts are mixed together, the mixture can be used for modelling, repairs to ceramics, cars, water pipes, tiles, etc. It has a working time of about three hours, when hardened it can be drilled, sawn, carved or filed. N.B. At low temperatures Milliput can go hard, and may need warming up before working with it and combining the two components.



code	Colour	weight	price
FIL190	Standard, Grey/Yellow	113.4g	£3.80
FIL193	Superfine White	113.4g	£6.40
FIL195	Silver Grey	113.4g	£5.56
FIL192	Black	113.4g	£5.32
FIL191	Terracotta	113.4g	£4.40

## IMPRESSION COMPOUNDS

### Flints Alginate [Fast and Slow Set]

Alginate is a powder which, when mixed with water [2:1 for pouring, 1:1 for spreading], forms a gel suitable for taking impressions of human tissue. A spearmint-flavoured natural plant extract which is quicksetting, self-releasing, and gives excellent reproduction of fine detail. It has been used by dentists for many years and is safe for use on the skin. The skin can be lubricated with petroleum jelly to protect hair growth. The Fast type gives two minutes for mixing and one minute for setting. The Slow type gives four minutes for mixing and two minutes for setting. Both types set quite soft making them easy to unmould. Each 550 g package is enough to make a full face cast. An outer casing can be made with Mod Roc or Plaster bandage [page 142] to support the Alginate or consider a Plaster of Paris mould to do the job [also page 142].



A quick how-to of casting using Flints Alginate



Decant a measurement of water into a mixing bowl



Measure a volume of Alginate according to your chosen ration



Sieve the Alginate into the mixing bowl to avoid clumps



Mix the solution slowly and take care to avoid creating air bubbles



Get messy! Use hands to thoroughly mix until it's a jelly-like substance



Hold still while the Alginate sets!

To finish, pour plaster into the mould, wait for it to dry and release it from the Alginate.

code	description	weight	price
PROALG550F	Fast	550g	£11.79
PROALG550S	Slow	550g	£11.79

# PROPMAKER'S MATERIALS

## WOODEN BALLS & RIVETS

### Wooden Balls

A multitude of decorative uses. For the vicar's coconut shy use 50 mm or 70 mm. Made from birch. Wooden knobs can be found on page 272. For coconut glue see page 501.



code	diameter	price	100+	1000+
PRO210	12mm	£0.15	£0.13	£0.11
PRO211	19mm	£0.18	£0.16	£0.15
PRO212	25mm	£0.35	£0.31	£0.29
PRO213	33mm	£0.66	£0.59	£0.56
PRO214	50mm	£3.25	£2.92	£2.75
PRO216	70mm	£5.65	£5.09	£4.85

### Round Wooden Rivets

These beech turnings are ideal for representing steel girder rivets. Our "Preferred Version" rivets have a cross section of almost half a sphere. However, some of our clients don't prefer them so we also stock a "Non-Preferred Version" which are flatter - roughly, the height is about a quarter the diameter. Full technical drawings can be found by scanning the QR code. For a realistic rust effect try Iron Powder [page 37], the Dirty Down Rust Spray [page 77], or HATO®Rust [page 37].



"Preferred"

code	diameter	diameter	price	100+	1000+
PRO200	3/4"	18mm	£0.38	£0.34	£0.32
PRO201	1"	25mm	£0.42	£0.37	£0.35
PRO202	1 1/4"	32mm	£0.47	£0.42	£0.40
PRO203	1 1/2"	38mm	£0.49	£0.44	£0.42



"Non-Preferred"

code	diameter	diameter	price	100+	1000+
PRO200NP	3/4"	18mm	£0.55	£0.51	£0.49
PRO201NP	1"	25mm	£0.63	£0.57	£0.55

### Hexagonal Wooden Rivets

A hexagonal alternative to the rounded rivets. Can be used to represent bolt-heads on industrial props and scenery. Available in two different sizes



code	size	price	100+	1000+
PRO220	M12	£0.41	£0.37	£0.35
PRO221	M16	£0.36	£0.32	£0.15

## WORBLA'S® ART SERIES

### Worbla's® Art Series

A range of thermoplastics which include sheets and granules. The sheets are easy to cut with scissors or a craft knife. For best results soften by using a heat gun [page 304] but a hairdryer, hot water or steam can be used in a pinch. Stays workable for a couple of minutes and can be reactivated with heat to continue to mould into shape. While its thinness has advantages, it can crack or split and should be layered or backed by Plastazote or Modelfoam for a more robust structure. No toxins are released. When it cools it will be rigid. Scraps can be reheated, combined and used like putty. Other than the TranspArt they have an adhesive side which will stick to itself to create a double layer, and they can be sanded and painted once cooled. When heated they can be stretched to a certain extent to create curves so are excellent for chest plates or armour. They are also able to be shaped over a mould. They can also be cut using a laser producing very fine detail. They can also be used in combination with Wonderflex [see next page] to create a stronger structure.

#### Worbla's® Finest Art

- ✓ Cheaper material with decent impact resistance; good for large items
- ✗ Not great for detail work; requires lots of sanding and priming to get smooth

#### Worbla's® Black & Pearly Art

- ✓ Very smooth; can take much finer detail and requires little sanding to finish
- ✓ Available in Black or a Pearly white [latter designed to be overcoated].
- ✗ Requires more heat to bond successfully; less impact resistance

#### Worbla's® TranspArt

- ✓ Remains clear after heating; can be stained or painted; easier than working with clear acrylic
- ✗ Tricky to get right; requires a lot of heat [120° C optimal]; slight warping like old glass

#### Worbla's® Kobra Cast

- ✓ Can be sewn into
- ✓ Fine, Stretchable and tear resistant mesh
- ✓ Retains some flexibility
- ✓ Like Varaform membrane and mesh combined
- ✗ More expensive
- ✗ Scraps can't be reheated and moulded together



code	Type	length	width	price
PROWORB5	Finest Art	500mm	750mm	£12.90
PROWORB5B	Black Art	500mm	750mm	£14.85
PROWORBP5	Pearly Art	500mm	750mm	£14.00
PROWORB5T	TranspArt	500mm	750mm	£14.15
PROWORB5C	Kobra Cast	500mm	750mm	£17.00
PROWORB1	Finest Art	1000mm	750mm	£23.75
PROWORB1B	Black Art	1000mm	750mm	£24.15
PROWORBP1	Pearly Art	1000mm	750mm	£24.00
PROWORBIT	TranspArt	1000mm	750mm	£25.20
PROWORB1C	Kobra Cast	1000mm	750mm	£29.95

### Worbla's® Deco Art

- ✓ Activates at a moderate temperature [65° C]; when softened can be dyed directly with acrylics; reproduces very detailed surfaces using moulds [e.g. silicone moulds]
- ✗ It is extremely sticky when activated



code	weight	price
PROWORBDEC250	250g	£12.05

## RHENOFLEX

### Rhenoflex RX 3145

An excellent value thermoplastic, Rhenoflex is a strong and tear resistant sheet material best suited to large scale working or making prototypes. Made from 2 layers of material, both sides have an inbuilt adhesive which is activated when heated. Both sides have a mesh which gives the surface of Rhenoflex a slight texture, similar to Wonderflex 3, so it's not recommended for capturing very fine detail. The high bonding strength of the compound adhesive makes it ideal for sandwiching within other materials, and will easily bond with most fabrics including wool or leather. Easily cut with scissors, and heated with either a heat gun or hot water; it should be heated to 130° C - 140° C to fully activate the adhesive, but heating to 90° C - 100° C will give the material the pliability to form a shape. Sheets are 0.95 mm thick, other thicknesses available to order.



code	length	width	thickness	price
PRORX3145HS	750mm	1000mm	0.95mm	£15.00

## WONDERFLEX 3™

### Wonderflex 3™

A light but tough heat activated formable composite sheet material which can be moulded to any shape by applying moderate heat [70 - 80°C]. A hot air gun [500 - 1,000 W] is the usual tool but ovens, microwaves and hot water can also be used. When hot, the adhesive activates so it will stick to itself [and not to your fingers]. Additional thicknesses are easily achieved. The patented material is easy to cut with scissors or utility snips, and the off-cuts can be saved for future projects. Once shaped it becomes very stiff and strong but can be reworked by reapplying heat. A clean and time-saving props material which is ideal for making masks and costume props.



code	Type	length	width	price
PROTRMHS	Half Sheet	698mm	1092mm	£32.00
PROTRM3	Full Sheet	1397mm	1092mm	£58.00

## FOSSHAPETM

### Fosshape™

A unique patented non-woven fabric. The breathable fabric can be cut to shape with scissors and sewn to itself or other fabrics. So what makes it unique? Fosshape™ can be heated with a domestic steamer [or hot air gun] to form any shape. When heated the material will shrink and become stiff. Fosshape™ is very popular with milliners and its' breathable properties and very light weight make it ideal for stiffening costumes and making large headgear and costume props. The white fluffy texture makes it a good choice for snow scene displays and costumes. Choose Fosshape™ 600 for larger items that require more structural support. Now available in a mid-weight jet black version.



code	Colour	width	width	weight	per m	45 m+
PROFS300	White	45"	1143mm	300gsm	£19.95	£18.95
PROFS400B	Black	45"	1143mm	400gsm	£27.70	£24.95
PROFS600	White	45"	1143mm	600gsm	£35.00	£31.50

## PLASTAZOTE®

### Plastazote®

A soft expanded polyethylene foam which is tough but easy to cut with scissors or craft knives. It can be vacuum-formed or heat moulded. If heat moulding, preheat the oven to 140° C and heat for 12 seconds per mm thickness turning if necessary. It should feel warm but not sticky. Density 45 kg per m³. Now available in Black or White!



code	Colour	length	width	thickness	price
PROPLW3	White	1m	750mm	3mm	£7.46
PROPLW6	White	1m	750mm	6mm	£13.80
PROPLW12	White	1m	750mm	12mm	£19.95
PROPLB6	Black	1m	750mm	6mm	£11.81

## EVA FOAM

### EVA Foam Sheet Black

Massive 1 x 2 metre sheets of EVA foam, can be pattern cut, glued, heat formed or carved, perfect for propmakers working at scale. For tidying up gaps or seams, why not try the new Flexi Filler?

Its water based and dries to a matt black finish. Medium 45 kg density. Please note: The colour of the foam can vary between batches, from black/charcoal grey to light grey.



code	Colour	thickness	width	length	price
PROEVA452	Black/Grey	2mm	1000mm	2000mm	£6.79
PROEVA455	Black/Grey	5mm	1000mm	2000mm	£9.95
PROEVA4510	Black/Grey	10mm	1000mm	2000mm	£17.50

## FLEXI FILLER - SEAM AND GAP FILLER FOR EVA FOAM

### Flexi Filler - Seam and Gap Filler

Water based flexible filler for EVA and Plastazote foams. Use this filler for filling glued joints/seams in foam, ready to use straight from the pot, simply apply with filling knife/old credit card/finger into the join. Can be smoothed with wet tool/finger while still drying or lightly wet sanded once fully cured. Perfect for use with black EVA foam as it dries to a matt, black finish.



code	Finish	Colour	weight	price
PROFLEXFILL	Matt	Black	100g	£4.98

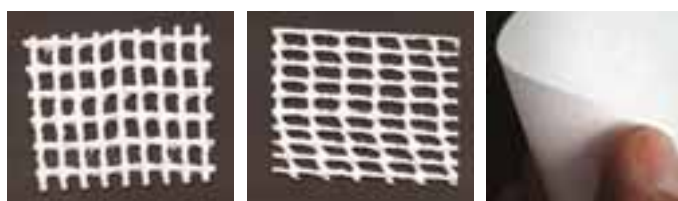


# PROPMAKER'S MATERIALS

## VARAFORM

### Varaform

This product has become a best-seller since we introduced it over ten years ago. It is a natural cotton mesh impregnated with a thermoplastic resin. When heated with hot water or hot air it quickly softens so that it can be worked into any shape. It sets on cooling to form a rigid lightweight armature. Varaform will stick to itself in its warm state and it can be re-heated and remoulded as many times as required. It is non-toxic and has an indefinite shelf life. Varaform is biodegradable, water resistant and is 50% lighter than Plaster of Paris making it ideal for use as elaborate masks. Extremely easy and clean to use and could potentially save the propmaker hours of messy work. Available in three grades. Recently, the manufacturers have changed to a smoother and more square cotton for the heavy; it's easier to use but narrower at 1,050 mm. We also stock smaller sheet sizes ideal for masks or sampling. Highly recommended. Ask for a free sample.



Heavy

Light

Membrane



A simple dinosaur mask made using aluminium armature wire with heavy Varaform and Membrane scales.

code [rolls]	Type	width	per m	10+
PROVAR201	Heavy	1050mm	£42.50	£40.50
PROVAR211	Light	900mm	£42.00	£39.60
PROVAR221	Gauze Membrane	1150mm	£40.65	£36.58
code [sheets]	Type	length	width	price
PROVAR204	Heavy	600mm	450mm	£17.25
PROVAR214	Light	600mm	450mm	£15.50
PROVAR224	Gauze Membrane	600mm	450mm	£19.85

## HATBOND CM

### Hatbond CM

Thermoplastic modelling material developed for millinery by Carole Maher, but also great for use in costumes, castings and hand moulded pieces. It is intended to give an inner structure to a variety of fabrics - both sides are sticky when heated, so it easily bonds to fabrics. Once cooled Hatbond CM retains it's moulded shape and is almost invisible between bonded materials. It can be reheated and moulded with a heat gun repeatedly to achieve the desired shape. Easily cut with scissors, or a knife. All sheets are approximately 0.3mm thick.



code	length	width	thickness	price
PROHBCM	1000mm	700mm	0.3mm	£15.75

## TAPIO PAPER - SCENIC STRUCTURAL PAPER

### Tapio Paper Pulp Sheet 900 x 800 mm

This elevated form of Papier Mache has been developed by Tapio Säkkinen, Head of Set Workshop / Environmental Head at Finnish National Opera and Ballet as a biodegradable, renewable alternative to fibreglass and plastic based coatings. It's basically raw paper pulp board that would otherwise go on to be processed into other paper products but in its raw state, its fibrous nature makes it perfect for heavy duty Papier Mache.



To use:

- Tear sheets to create feathered edges that become seamless when overlapped.
- Dip into water.
- Then dip into PVA Glue thinned with up to 25% water, if necessary, you can also add a flame retardant at this point. Most all-purpose flame retardants would work but Bio Retard is designed for cellulose-based materials.
- Squeeze out as much liquid as possible, you can do this best by laying out the wet paper on to a wire mesh and squeegeeing out the excess moisture.
- Drying times vary and depend entirely on ambient temperatures but a layer should dry if left overnight somewhere warm. In a cold warehouse it could take many days!

Can be used to coat polystyrene or chicken wire frames, one layer will give a tough impact resistant surface. With the use of a barrier coat or release wax you can even cast the paper into moulds. Scan the QR code for step-by-step instructions and Tapio himself standing on a bowl made from the eponymous paper. Upeaa!



code	length	width	price
PROTAPIO	900mm	800mm	£5.00

## MOD MESH

### Mod Mesh Aluminium

These are aluminium meshes which form easily in the hand and retain fine detail. Available in fine, medium and coarse gauges. Perfect for masks and small detailed props. May be covered with Mod Roc or the Jesmonite System [page 130].



code	Material	length	width	hole length	hole width	price
PROM078A	Fine	3m	500mm	2mm	1mm	£19.65
PROM078C	Medium	3m	500mm	4.5mm	2.5mm	£19.45
PROM078F	Coarse	3m	500mm	10mm	5mm	£19.98

### Mod Mesh Copper

All the features of the aluminium meshes but this copper mesh can also be soldered.



code	Material	length	width	hole length	hole width	price
PROM074A	Medium	3m	500mm	3mm	2.5mm	£91.12

## CHICKEN WIRE

### Chicken Wire

Unfortunately, it is now hard to source the "galvanised after" wire netting. For propmakers galvanised-after mesh is much preferred because it holds its shape better than the rather springy chicken wire made from pre-galvanised wire. We can still obtain 50 m rolls of 25 mm- and 50 mm-hole mesh which is "galvanised after" [to BS 443 EN 10223/2] but the smaller rolls are sadly made from pre-galvanised wire.



code	Type	length	width	gauge	price
PR0300	Pre-galvanised	10mm	900mm	22g	£22.60
PR0310	Pre-galvanised	25mm	900mm	22g	£49.95
PR0301	Pre-galvanised	10mm	900mm	20g	£19.98
PR0302	Pre-galvanised	10mm	900mm	19g	£13.04
PR0314GA	Galvanised after	50mm	900mm	20g	£89.98
PR0301GA	Galvanised after	50mm	900mm	20g	£62.38

## RIGID FOAM SHEETS

### Rigid PVC Foam Sheet

Lightweight rigid PVC foam sheet, sometimes referred to as Foamex – a real alternative to acrylic. The sheets are 3 mm thick and measure 605 x 605 mm. Available in black or white. Supplied with a polythene protective film on one side.



- ✓ Both faces semi-matt, ideal for printing and painting
- ✓ Self-extinguishing Class 1 fire rating
- ✓ Weather resistant and rotproof
- ✓ Can be nailed without splitting [blunt the nail head first and nail at least 6 mm from the edge]
- ✓ Easy to machine, no specialist tooling
- ✓ Fully thermoformable

A full information sheet is downloadable from our website - [flints.co.uk](http://flints.co.uk).

code	Colour	length	width	thickness	price
PRO1002114W	White	605mm	605mm	3mm	£7.13
PRO1002114B	Black	605mm	605mm	3mm	£7.13

## VACUUM-FORMED SHEETS

### Vacuum-Formed Sheets

This is an economical way to achieve large areas of brick and stone effect. Made from 0.3 mm flame retardant PVC these sheets are very lightweight. Prepare the surface using Covent Garden Primer or new RCS Primer [page 15]. Adding these primers into subsequent paint coats will help them stick and resist scratches. Use a flexible paint like Rosco Supersaturated [page 17] because once cut out these sheets can be rolled up. When the basecoat is dry, the topcoat can be textured using a paint technique and the mortar accentuated with a texturing material [page 50]. Joins can be disguised with muslin. Staple to ply clad flats. Only available in grey.



Rough Worn Brickwork



Brickwall English Bond Brickwork



Rough Slates



Rubble Stone Wall

code	description	length	width	thickness	price
PROVAC01	Rough Worn Brickwork	2235mm	1040mm	12mm	£29.00
PROVAC02	Brickwall English	2394mm	1070mm	12mm	£29.00
PROVAC03	Rough Slates	2270mm	1060mm	20mm	£29.00
PROVAC04	Rubble Stone Wall	2240mm	1040mm	40mm	£29.00

## ALUSHAPE

### Alushape

Aluminium shim that can be manipulated into shape very easily by hand. We stocked this product many years ago but we discontinued it as sales were slow. We thought it was a real shame at the time as it's an ingenious product, can be endlessly reused, lightweight and inherently flame retardant. We were convinced that it was worth re-introduction following a visit to Nottingham Playhouse. We were invited by their Sustainability Officer - Talie Smith to speak at their Sustainable Productions Summit and see their new show "The Children" which used Alushape to great effect for a cliff face at the front of the stage, with texture added by paper based Dekozell (See page 50). Conventional wisdom would have been to carve and overcoat the cliff face from polystyrene blocks, generating lots of waste material. So now Alushape is back, sold by the linear metre in 3 varieties depending on your application.

#### Alushape Cretonne

One side has been pre mounted with canvas making painting or adding texture a breeze.

#### Alushape Brut

This is bare, uncoated aluminium, most scenic paints will stick to the surface but for durable results, prime with Flints Multipurpose or Four2Four Primer prior to painting.

#### Alushape DIY

Adhesive backing on one side only for sticking directly on to surfaces or laminating with a material of your choice.



Alushape Brut



Alushape Cretonne



Alushape DIY

code	description	width	per m
PROASBRT	Alushape Brut	1350mm	£27.35
PROASCRE	Alushape Cretonne	1250mm	£35.79
PROASDIY	Alushape DIY	1250mm	£27.05



# PROPMAKER'S MATERIALS

## EXPANDED POLYSTYRENE BALLS & BEADS

### Polystyrene Balls

Turned and moulded flame retardant polystyrene balls for set decoration and props. Also can be ordered in other sizes.



code	Type	diameter	price
PROPB50	moulded	50mm	£0.76
PROPB100	moulded	100mm	£1.89
PROPB150	cut	150mm	£29.76
PROPB250	cut	250mm	£56.29

### Flints Flame Retardant Eco Bio Beads

Sustainable, renewable, expanded polylactic acid Bio Beads made from corn starch and sugar cane used in just the same way as polystyrene. Great for lightweight gap filling, adding to textures or even filling up a bean bag. BioBoard coming soon. Compostable to EN 13432 standard and FR grade to BS 5852:Part2:1982. Cradle to Cradle certified



code	volume	price
FHSBB60L	5 cubic feet	£38.70

## BIO BASED POLYSTYRENE ALTERNATIVE

### Composta Block

Biodegradable, recyclable, compostable polystyrene alternative! NEW Composta Block™ is made from expanded PLA [Poly-Lactic Acid], a renewable polymer derived from the biomass from plants, such as corn & sugar cane. The easiest switch – just carve using the same tools you normally use! The density of this material is halfway between standard EPS [Polystyrene] & Modelfoam, which allows for greater detail when carving. It can be cut successfully with a hot wire, but because of the higher density smooth cuts can only be achieved at a higher temperature which produces more smoke than would be seen in EPS. The smoke produced has a sweet, burnt sugar smell, and, although more pleasant than working with traditional polystyrene, we advise working in a well-ventilated area and wearing appropriate PPE. Carving at lower temperatures reduces the smoke point, but takes a lot longer, so we would recommend carving primarily with knives, wire brushes or surforms, as good details can still be achieved. In its molten form, the Composta Block™ is very sticky and sets to a hard brittle plastic so cut edges can be a little sharp. Fully compostable, the Composta Block™ naturally biodegrades in the presence of bacteria & living organisms, especially when subjected to the right composting environment. At ambient temperatures it can be used in practically every scenario that you could use EPS, without affecting the performance. Currently only available in a small sheet size, Composta Block™ can be coated and glued similarly to EPS, but with its' added solvent resistance it will take any contact adhesive and has more coating options including the option to use polyester resins directly on to the surface of the Composta Block™ without skimming it first.



- ✓ Fully Biodegradable & Compostable
- ✓ Recyclable
- ✓ From a Renewable Source
- ✓ Carbon Neutral



code	length	width	thickness	price
PROBPB4	855mm	565mm	40mm	£49.50

## FLAME RETARDANT-GRADE POLYSTYRENE

### Expanded Polystyrene

Flints stock two thicknesses of flame retardant-grade polystyrene in black or white. Polystyrene should be glued using a suitable adhesive such as Tretobond 375 or General Purpose Adhesive 1088. Flints Cyclorama Adhesive, Copydex, Flexbond and two part foams are also suitable.

NB: Due to packaging difficulties, this product cannot be sent on parcel carriers. Flints can deliver on our London Van Run route [see back of catalogue for postcodes], or it can be collected from our trade counter. For Black Foamboard see page 116. For Polystyrene Balls see above.



code	Colour	length	width	thickness	price
PROFRP1	White	2400mm	1200mm	25mm	£15.70
PROFRP2	White	2400mm	1200mm	50mm	£23.60
PROFRP1B	Black	2400mm	1200mm	25mm	£22.30
PROFRP2B	Black	2400mm	1200mm	50mm	£31.95

### Some thoughts on polystyrene

Although super useful stuff – lightweight, robust, carve-able, the environmental impact of polystyrene is horrendous. On top of all that we have recently been struggling to source it! Thankfully some good news – there are now alternatives. As well as Composta Block™ there are our amazing new Bio Beads, which are compostable, flame retardant, and can be used just the same way as polystyrene. Read more about sustainable theatre production and Flint's thoughts and efforts on pages 424-427.

## POLY BOARD HOLDER

### Poly Board Holder

The best-looking Poly Board Holder in smart black powder-coated steel. Floor standing. Takes a 50 mm sheet but extend their usefulness by having one side a sheet of our 25 mm white FR polystyrene and the other side a sheet of our 25 mm black FR polystyrene [find the range on previous page] – white for a soft light, black to create harsh shadows for sculpting. With four non-marking plastic stand off feet.

Dims L x W x H: 457 mm x 216 mm x 267 mm.



code	weight	takes sheet size	price
DOUG1147	1.75kg	50mm	£51.43

## POLYSTYRENE CUTTERS

### Flints Polystyrene Cutter

A robust machine designed to cut polystyrene up to 8 ft thick using a thin heated wire. The machine also has a thick-wire sculpting facility. Isolated low voltage output for safety with overload cut-out. Continuously variable control including ampere meter to accurately set the wire temperature. Comes with a 12 month limited warranty. Available in 240 V and 110 V versions.



code	description	price
FHSPOLY	Polycutter Machine only 240 V [White]	£860.48
FHSPOLY110V	Polycutter Machine only 110 V [Yellow]	£860.48
FHSPOLYTWH	Thin-wire handles [pair]	£102.80
FHSPOLYSH	Sculpting wire handle	£68.15
PROT400SW16	Sculpting Wire per metre Ø 1.6 mm	£4.30
PROT400SW16D	Sculpting Wire 29 m roll Ø 1.6 mm	£109.35
PROT400CW	Thin cutting wire 125 g reel Ø 0.71 mm	£29.95
FHSPOLYK	Machine with both handles & both wires 240 V	£998.00
FHSPOLY110VK	Machine with both handles & both wires 110 V	£998.00
FHSPOLYFUSE	Spare fuses	£1.50

### Edma Handheld Hot Knife Foam Cutter

Hot knife with with cooling system for continuous operation. An innovative new tool to cut polystyrene. Simply plug in, attach a blade and squeeze the trigger to operate. Cuts through polystyrene like butter leaving no mess. Includes 2 long blades for slicing the board into shapes accurately and groove cutter that cuts channels, great for creating raised designs. Dial on handle to adjust the heat settings.

Kit Includes: 1 x 200mm Blade, 1 x 250mm Blade, 1 x 30mm Groove Cutter, 1 x Wire Brush for cleaning, 1 x Blade Fixing Key. CE certified. All supplied in compact carry case.



code	description	price
PRO3675	Edma Handheld Hot Knife Foam Cutter	£235.10

### Edma Hot Knife Guide

Guide for Edma Hot Knife to cut straight lines from up to 210mm from edge



code	description	price
PRO4666	Edma Hot Knife Guide	£49.85

### Proxxon Hot Wire Bow Cutter

Lightweight Bow Cutter for Polystyrene, soft and rigid foams, thermoplastics or Compostablock. The throat of the cutter is 200 mm wide and has a cutting width of 400 – 650 mm, which makes it perfect for cutting in straight line or shaving down blocks.

For large scale carving you can't beat a proper Polycutter that can heat a wire up to 8 ft long but they are quite the investment, not to mention very heavy. This Bow Cutter is a reasonably priced alternative that just plugs straight to the wall with a 230V plug.

SPECIFICATION: 230V. 50/60Hz. 50W.

Secondary voltage max. 40V, 1.2A. Cutting temperature of wire Ø 0.2mm continuously variable from 100 - 350 °C. Weight 850g. Insulated to Class 2



code	price
PRO105036	£66.15

### Proxxon Thermocut Bench Cutter

Ideal for architectural and theatre modelmakers. The 390 x 280 mm working surface is of aluminium CoBond compound. This eases the pushing of work pieces. The table top has a printed grid and protractor. Supplied with a dual function fence with lockable feed bar. The throat depth is 350 mm and the machine will cut material up to 140 mm thick. Cutting wire temperature is variable between 100° and 200°C. Weighs approx 3 kg. Insulated to Class 2 requirements. 240 V, 50/60Hz. Working space: 390 x 280 mm.



code	description	price
PRO27080	Polystyrene Cutter	£95.82
PRO28080	Spare Wire [30 m length x 0.2 mm dia.]	£6.90

### Proxxon Hot Wire Cutter

The wire can be deformed with pliers or by hand to create a profile for easy freehand cutting into polystyrene. The pivoted fixing element can extend the wire up to 200 mm. Takes just 1 second to heat up! The Wire Cutter must be used with the Micromot Adaptor. Sold separately or as a kit.

Specification: Cutter: 12V. 60W. 50/60Hz; temperature is variable between 150° and 350°C. Adaptor: Micromot NG 2/S 2A Single Speed 12V.



code	description	price
PRO211076	Proxxon Hot Wire Cutter Thermocut 12/E	£32.40
PRO476059	Proxxon Micromot Mains Adaptor	£27.23
PRO211076K	Kit of both of the above	£59.63
PRO212470	Spare Wire [200 m length x 0.85 mm dia.]	£13.73

# MODEL MAKING

## BALSA WOOD

### Balsa Wood

Finest quality eco-friendly balsa for all your model making and prop needs.



code	description	price
PROQWA1	Random sizes [about 72 cubic inches]	£20.99

## FINE-CELL POLYSTYRENE

### Modelfoam

Fine-cell extruded polystyrene which is very easy to shape and form using conventional hand tools. Modelfoam comes in two grades – use the dense grade for finer detail work. Battenburg colours: dense is always blue but standard may be orange or yellow [at random!]. The dense blue version is increasing in popularity amongst cos-players as a structural support for more flexible thermoplastics like Worbla [see page 110].



code	Grade	length	width	thickness	price
PRO1001933	Dense	600m	300mm	25mm	£5.95
PRO1001773	Standard	600m	300mm	25mm	£4.65
PRO1001971	Dense	600m	300mm	25mm	£10.37
PRO1001810	Standard	600m	300mm	25mm	£6.29

## FOAMBOARD

### Black Foam Sheet

This board is ideal for making model boxes. It is easy to cut, ultra lightweight and makes strong and rigid constructions. Corners can be temporarily fixed with pins so large models can be dismantled for transportation. Unfortunately, if you want a single sheet you will need to buy it from our trade counter because of the risk of damage when couriered. Pack quantities can be delivered. Sheet size A2 [420 x 594 mm]. 5 mm thick.



code	length	width	thickness	price	20+
PROWF7002	594mm	420mm	5mm	£3.98	£3.58

## BLACK MASKING TAPE FOR MODEL MAKERS

### Masking Tape Black

This tape is ideal for securing model boxes made from black foamboard. It forms a very neat fixing which can be easily scalpeled through to aid transportation. Also widely used by photographers for sealing light leaks. Easy removal even after long periods.



code	Colour	width	price
TAP150N	Black	25mm	£2.50
TAP151N	Black	50mm	£4.95

## USEFUL TAPES

### Filament Cross-weave Tape

This fibreglass-reinforced tape is incredibly strong and suitable for providing structural support in model making. The cross-weave filaments give the tape bi-directional strength. Specially formulated to give good adhesion to fibreboard surfaces.

Adhesion To Steel: 10 N/10 mm. Elongation At Break: 5%. Tensile Strength: 240 N/10 mm. Thickness: 120 microns



code	width	width	price
TAPFRCT25	1"	25mm	£2.49
TAPFRCT50	2"	50mm	£4.52

## ADHESIVES

### UHU and UHU Gel

Strong crystal-clear adhesives suitable for virtually everything except expanded polystyrene. Traditionally used in building set models, the UHU gel is a non-drip version which many find cleaner and easier to use.



code	description	volume	price
UHU042862	UHU All Purpose	35ml	£2.83
UHU043437	UHU Extra Gel	31ml	£2.83

### Zap a Gap

Fills Gaps. Allows 7 – 10 seconds for positioning and cures in 20 seconds. Can be accelerated by using the aerosol [Kicker]. Bonds most materials including metal, wood, rubber, pottery, and most plastics. The aerosol [Kicker] is an accelerator only, not an adhesive!



code	description	size	price
ADHPT02	Adhesive	1oz	£7.08
ADHPT05	Adhesive	4oz	£24.13
ADHPT15	Aerosol [Kicker]	2oz	£6.55

## SAFETY RULE

### Safety Rule

With a unique M profile which keeps the fingers well away from any knife edge when used for cutting or scoring card etc. Stainless steel with both metric and imperial scales.



code	length	length	price
MAU1773012	12"	300mm	£3.38



## SUGAR GLASS BREAKAWAYS



### Breakaways

Used within the theatre, film and television industries for stunts and special effects. The Champagne bottles are also widely used for boat launches. Breakaway bottles and glasses shatter very realistically without causing injury. We should point out that these objects are very fragile so regrettably, we can only sell them sent direct in special sprung boxes [box included in price] containing twelve of the item. Breakaways must be stored in a cool place away from direct sun or heat. The maximum window-glass sheet size is 1 m x 1 m. The sheets are packed in wooden crates to allow for transportation. **WE CAN ONLY DESPATCH THESE GOODS AT THE CUSTOMER'S RISK.**

Window Glass price on application, call for quote.

code	description	box of 12	code	description	box of 12
BAG10B	Champagne Flute	£327.24	BAG07B	Champagne [dressed]	£741.74
BAG18B	Wine Glass	£327.24	BAG09B	Wine [clear]	£305.42
BAG36B	Paris Goblet [red wine]	£242.10	BAG09GB	Wine [green for red wine]	£283.61
BAG04B	Whiskey Tumbler	£305.42	BAG37B	Wine [green for white wine]	£283.61
BAG23B	Pint Glass [standard]	£283.61	BAG39B	Vodka Bottle	£414.50
BAG03B	Hiball glass	£283.61	BAG33B	Dinner Plate	£305.42
BAG21B	Beer [brown Budweiser]	£283.61	BAG25B	Cut Glass Decanter	£563.75
BAG08B	Champagne [plain]	£305.42	BAG40B	Bayonet Light Bulb [clear]	£261.79

## BREAKAWAY RAW MATERIAL

### Breakaway Glass

This breakaway glass raw material has shatter characteristics closely resembling glass. It has excellent clarity and low surface tack when handled. Melts at 104° C. Small panes of glass [about 1 ft<sup>2</sup>] can be made relatively simply by using a sheet of Melamine-faced plywood as a mould. Screw some 25 mm square battens onto the ply to define the size. The battens should be covered in parcel tape or polythene to stop the Breakaway Glass from sticking. Use a light release agent on the board such as Formula 6 [page 142]. Heat the Breakaway Glass in a double pot with an air gap rather than a water jacket to 104° C. Pour the melted glass to cover the board and leave it level to cool. Unscrew one or more of the battens and tap the Melamine-covered board with a hammer. The glass will slide off. We used to use squares of Underfelt [page 160] between each sheet and four the sheets in a special wooden box. Keep the boxes cool. See also Rubber Ice & Glass on page 121.



code	per kilo	20+
PROBG25	£29.50	£25.95

## SMASH PLASTIC

### SMASH! Plastic

This is a two-component urethane that is mixed 1A:1B by volume and cures to a water-clear solid plastic designed to break like glass on impact. The Smooth-On lab did a tremendous balancing act, formulating this product not to be too fragile, but to certainly break on impact. It truly looks and sounds like breaking glass when smashed. Broken fragments look like broken glass. SMASH!™ can be cast solid [for making window panes] or rotationally cast [for making bottles, drinking glasses, etc.] in thicknesses **NO GREATER THAN 1/8" [3.2 mm]**. If using this product for smashing over someone's head, make sure you observe this thickness limitation or someone could be injured. If casting solid, vacuum degassing or pressure casting are recommended to help eliminate air voids. If rotocasting, finished castings will look like frosted glass. If you want clarity in a bottle casting, better to build a core mould and cast with a 1/8" wall thickness. SMASH!™ can be pigmented to look like a beer bottle – or any other colour – using SO-Strong™ tints [please phone for information].



code	weight	price
PROSP9	900g	£8719
PROSP972	7.2kg	£416.10
PROSP9362	36.2kg	£1,844.53

# SPECIAL EFFECTS

## COBWEB EFFECTS

### Kobweb Spinner

This device attaches to a standard electric drill to spin out cobweb filaments for effects purposes. To use, fill the container with Kobweb solution, crack open the lid a fraction and spin at about 2,000 rpm. The filaments should shoot out forwards [hey, check your drill is not in reverse!] about 3 or 4 ft. For full instructions and data sheets visit [flints.co.uk](http://flints.co.uk).



code	price
SFXCOBSPINNER	£121.00

### Kobweb Solution

For use in the Kobweb Spinner.

code	weight	price
SFXCOBFLUID	500g	£25.00

### Kobweb Cleaner

For use with a soft rag to remove cobweb contamination.

code	weight	price
SFXCOBCLEANER5	500g	£13.45

### Kobweb Spray

An easy to use aerosol which sprays copious amounts of cobweb filaments. Ideal for theatre, photography, and display purposes. Solvent-based, cleans up with White Spirit [page 69]. N.B. At low temperatures the vapour pressure can drop and the effect won't work. Follow guidance on can carefully.



code	price	12+
PAT975	£15.98	£14.39

## LIGHTSTICKS

### Lightsticks

Non-toxic, non-flammable, 360° illumination, 100% safe. Available in six colours. Just bend and shake to start.



code	Colour	duration	price
SFXG12	Green	12hrs	£1.95
SFXR12	Red	12hrs	£1.95
SFXY12	Yellow	12hrs	£1.95
SFXO12	Orange	12hrs	£1.95
SFXB8	Blue	8hrs	£1.95
SFXW8	White	8hrs	£1.95

## SMOKE AND FOG

### Mini Mist Machine 240V

The Mini Mist has long been established as the leading aerosol fog machine. A robust hand-held unit, making it the chosen generator for the film and TV industries as well as the armed forces and fire brigades.

- ✓ Can be used off the power supply for up to 20 minutes
- ✓ One canister will provide six x 1 minute bursts at full output
- ✓ Smoke output of 180 cubic metres per minute
- ✓ Variable control
- ✓ Weighs just 8 kg



code	description	list price	Tradeline
SFX1903	Mini Mist Smoke Machine	£1093.00	£872.20
SFX1911	Smoke canister for above [400 ml]		£19.25

### Antari Z 80

This small versatile and economical fogger is a great choice for small stages and clubs. Heater: 700 W. Tank: 1 L. Warm-up time: 4 minutes. Fog output: 80 m³/minute. 230 V. Weight: 4.9 kg. Supplied with remote pendant controller.



code	description	list price	Tradeline
SFX60651UK	Antari Z 80 Smoke Machine	£98.52	£94.18
SFX60650UK	Wireless Version	£115.65	£108.11

### Antari Z 1000

This medium-size machine pumps out masses of fog. It is DMX controllable and also available in a wireless version. Heater: 1,000 W. Tank: 1.7 L. 1st Warm-up time: 5.5 minutes. Fog Output: 283 m³/ minute. Consumption: 1 L/per 49 minutes at 100%. 230 V, Dims: 400 x 182 x 177 mm. Weight: 4.9 kg. Supplied with 10 m remote pendant controller [wireless controller available as extra].



code	description	list price	Tradeline
SFX60673UK	Antari Z 1000 Smoke Machine	£307.56	£280.35
SFX60678	Z 50 wireless controller		£64.60

### Antari Z 350 Hazer

This is the latest creation from Antari using new air-pump technology which generates a dry haze and also provides its heater with a self-clean function. Very low consumption rate giving 430 minutes use on a full tank at 100%. When no signal is received and it goes into sleep mode the two-channel DMX function automatically starts the self-clean. Heater: 800 W. Tank: 1.3 L. Fog output: 84 m³/ minute. Consumption: 3 ml/min at 100%. 240 V. Dims: 320 x 153 x 391 mm. Weight: 8.7 kg. Supplied with VR-IT Volume remote pendant controller.



code	list price	Tradeline
SFX60760UK	£398.37	£361.14

## FOG FLUIDS

### Rosco Fog Fluid

Rosco's water-based fog fluids have been developed and proven over many years and have justly become the most widely used fog fluids in theatre, live entertainment and theme parks.

- ✓ Rosco Fog Fluid for thick clouds with very long hang time. Has a mild scent. The best general purpose fluid.
- ✓ Rosco Stage and Studio for fast dissipation. Best for chilled low-lying fogs.



code	description	volume	price
ROS830711	Rosco Fog Fluid	1L	£28.00
ROS830011	Rosco Stage Studio	1L	£32.00
ROS8305125	Rosco Fog Fluid	5L	£91.50
ROS8300135	Rosco Stage Studio	5L	£95.25

### Showtec Fog Fluids

Compatible with the Antari machines. A great value water-based fluid that produces a white fog.



code	volume	price
SFX60627	1L	£4.12
SFX60603	5L	£10.29

## SMOKE CANS AND PELLETS

### Smoke Grenades

A two-second delay followed by thick brightly coloured smoke lasting an average of 90 seconds. Originally designed for combat sports, these cool burning smoke grenades are not to be used inside. Ring Pull activation for ease of use [follow instructions carefully]. The manufacturer advises that as long as the body of the grenade, once depleted, is disposed of properly - including the plastic cap and ring pull - there should be no negative impact on the environment from use. Regrettably due to shipping and transportation restrictions we are no longer able to sell these individually. Boxes of 50 can be ordered and will be sent direct from the manufacturer. Boxes of 50 can still be collected from our trade counter and delivered on our Van Run. Please note, the date printed on the top indicates production date. When stored correctly the grenade should have a shelf life of 5 years. Over 18's only - proof of age will be asked on purchase.



code	Colour	box qty	per box of 50
SFXWGB	White	50	£292.00
SFXRSG	Red	50	£292.00
SFXYSGB	Yellow	50	£292.00
SFXBSGB	Blue	50	£292.00
SFXOSGB	Orange	50	£292.00
SFXGSGB	Green	50	£292.00

### Fantasy FX [Haze in a Can]

One can will fill a normal room 15 times! Enhances lighting effects and creates atmosphere ideal for theatre, photographic, disco or nightclub use. Available as a standard aerosol or a continuous aerosol where the trigger locks-down for a constant hands-free release.

code	description	size	price
SFXFXR	Regular Type	16oz	£21.84
SFXFXLD	Lock-Down Type	16oz	£21.84



### Magican [Haze in a Can] [Long-lasting]

It will last you all night! Odourless and completely safe, meeting all safety standards. Not known to affect any with breathing problems. This can sprayed for 15 - 30 seconds will create a smoky haze that lasts for 1 - 2 hrs. It will fill a large room 15 times. 10 fluid ounces [284 ml].

code	volume	price
SFXMH	284ml	£12.32



### Smoke Pellets

Oil-free and non-acidic pellets that should be lit on a fireproof base. Each pellet lasts for about 1 minute 25 seconds. Not designed for special effects, see safety data sheet on our website to decide if it's right for you.

code	description	price
SFXSPI	10 pellets	£19.86



## SMOKE MATCHES

### Cool Burn Smoke Matches

Cool burning plumber's smoke matches for detecting leaks in pipes or for creating a smouldering smoke effect. Simply strike the match on the lid of the tub and it will produce smoke for around 20 seconds, great for photographic effects. Always use on a fireproof base.

SPECIFICATION: Releases 0.75m³ of dense white smoke, Pack of 25 matches in a resealable plastic tub

Much of Flints' product testing happens on the floor round the back of the warehouse by the bins. The glamour.



code	price
SFXCBSM	£2.79

## HERBAL CIGARETTES

### Honeyrose White Cigarettes & Loose Herbal Smoking Leaf

Specially designed for the film and theatre industry, the herbal cigarettes have white tipping paper/filter and no logo for an ageless look. Cork tipped version available, and we also stock the loose leaf. Honeyrose herbal products are 100 % natural, and guaranteed to be completely free of nicotine and tobacco.



code	description	pack size	price
SFXHCWC	White Cigarettes	20 cigarettes	£22.40
SFXHCCK	Cork Tipped Cigarettes	20 cigarettes	£23.40
SFXHCLL	Loose Leaf	30g	£17.70



# SPECIAL EFFECTS

## SNOW AND FROST EFFECTS

### Antari SW250 High Power Snow Machine

This is a digitalised snow machine with onboard DMX and wireless control. Its snow output has increased by 250% over the previous model! In addition, the time and volume controls allow you to control your snowflakes even more accurately. Virtually silent. Not recommended for continuous use (such as in a shop display). 240 V 50 Hz. 50% output: 600 W. Full output: 1,290 W. Output: 240 ml/min. Tank capacity: 5 L. Fluid consumption: 1 L/ per 4 minutes. Dims: 550 x 276 x 228. Weight: 12.6 kg. Supplied with W-1 wireless remote, LCD display and trunnion arm.



code	description	list price	Tradeline
SFX80372	Machine	£758.18	£682.65
SFX80358	Fluid 5L		£12.64

### Show Snow

Polyethylene self-extinguishing snow for falling snow effects or dressing. This is the best artificial snow around. Fire rated to Source 1BS5852. Fire regulations vary so check with your local authority before ordering. Covers 10m<sup>2</sup> to about 4mm. Consider sprinkling some Opalina Snow [page 46] over the top for a sparkling effect!



code	volume	price	10+
SFX700	58L	£48.00	£43.00

### Kolsnow

Artificial falling snow effect. Melts in 10 - 15 minutes leaving no trace. Can be sprayed onto clothes, scenery and the ground for a realistic melting snow effect. Clean with water if required. Supplied with two nozzles, a red one for larger flakes and a white one for smaller flakes.

code	volume	price
PAT973	600ml	£12.55



### Snocene

Decorative snow spray for windows, mirrors, decorations, trees, foliage, and scenery. Can be cleaned with hot soapy water or solvents. Once applied, the snow is non-toxic and flame retardant.

code	volume	price
PAT972	400ml	£7.85



### Frost Crystal Spray [Krystal FX]

Realistic frost crystals which stick to glass. Spray onto the glass, allow to dry and watch the crystals appear in minutes. Clean away with water. Now in pump spray bottle for a finer mist and better control.

code	volume	price
PAT974	250ml	£6.53



### Frost & Snow Effect by Dirty Down

A light spray from the can will give a gentle frost effect. A harder spray creates a hard frost or snow. For other snow effects see Marble Dust [page 30], and Opalina Snow [page 46].

code	volume	price	12+
PAT9598	400ml	£8.95	£8.05



## MAKE-UP AND BLOOD EFFECTS

### Pigs Might Fly [Blood]

When multi-award winning special effects make-up artist, Nick Dudman, needed an ultra-realistic, fully washable, non-staining, running theatrical blood – he brewed his own. We're really amazed by how washable it is! We've also heard of blood being removed from a silk dress with damp kitchen towel and leaving no mark. Just don't dry clean. Also for use in mouth capsules and for mouth effects. Two types: Standard is arterial/fresh; Dark is venous/aged.



code	Type	volume	price
SFX46146	Standard	30ml	£6.75
SFX46145	Standard	250ml	£16.25
SFX46144	Standard	500ml	£26.50
SFX46143	Standard	1L	£47.50
SFX46146D	Dark	30ml	£6.75
SFX46145D	Dark	250ml	£16.25
SFX46144D	Dark	500ml	£26.50
SFX46143D	Dark	1L	£47.50

### Kryolan Stage Blood

Safe for use externally and for mouth effects. Washable, but try it on a sample of the costume first. Can be used to fill capsules.



code	volume	price
SFXSB6	500ml	£36.96
SFXSB7	1L	£63.95

### Mouth Capsules [Blood]

Flints supplies gelatin capsules empty or ready-filled with powdered stage blood. Bite to release, when mixed with saliva it will produce a realistic blood effect.

code	description	price
SFXGB232	20 Empty Capsules	£1.78
SFX04046	10 Full Capsules	£8.25
SAF300866	50 ml Syringe [for filling]	£1.50



### Problood® - Original

Realistic fake blood that demonstrates great value for the quality of the product, if it's good enough for Holby City it's good enough for Flints. Non Staining. Vegan. Washable (test before heavy use on fabrics). Safe to be held in mouth for short period of time. Please Note: Do not use near eyes! Available in Original and Dark for aged blood effect.



code	Type	volume	price
SFXPBR0060	Original	60ml	£8.59
SFXPBR0100	Original	100ml	£9.59
SFXPBR0600	Original	600ml	£35.35
SFXPBR1000	Original	1L	£48.82
SFXPBD0060	Dark	60ml	£8.59
SFXPBD0100	Dark	100ml	£9.59
SFXPBD0600	Dark	600ml	£35.35
SFXPBD1000	Dark	1L	£48.81

## Congeaed Blood

Blood that has congealed - Lovely! Fantastic for fake wounds, especially those festering untreated ones. Not to be used in mouth or eyes. Washable. Vegan. Not tested on animals.



code	volume	price
SFXCB0030	30ml	£7.32
SFXCB0100	100ml	£13.39
SFXCB0350	350ml	£30.15
SFXCB1000	1L	£67.63

## Bruise Gel

Comes in five colours that build up into all the stages of bruising. Apply by dabbing on sparingly. Washes off with soap and water. Available in Blue, Brown, Red, Purple & Yellow. These gels are not just bruising however, they are also great at recreating a plethora of heinous conditions like frostbite, jaundice, sunburn, infections and lacerations. We now offer a deal price for all five, so go nuts.



code	Colour	volume	price
SFX46100LR	Light Red	30ml	£7.53
SFX46100BR	Brown	30ml	£7.53
SFX46100B	Blue	30ml	£7.53
SFX46100P	Purple	30ml	£7.53
SFXBGY30	Yellow	30ml	£7.53
SFXBRUISEK <b>NEW</b>	Bruise gel kit of all five colours		£29.00

## Liquid Latex

Liquid rubber compound for making prosthetic pieces and special effects. Low in ammonia content. Can be used on the skin and peeled off when dry but remember to protect body hair with a sealer.



code	volume	price
SFX02542	250ml	£9.98

## Glycerine

A clear heavy liquid that has oily properties and is a by-product of the soap industry. It is odourless and will mix with water. If dyed red with cochineal it resembles blood. Comes in a 6 kg flagon which is approximately 5 L or 10 armfuls.



code	weight	price
SFXGLY	6kg	£24.00

## Snazaroo Face Painting Kit

A simple starter kit with enough materials to paint 300 faces! Not suitable for use on children under 3 years old. Supplied in a box with carry handle containing: 28 page step-by-step painting guide, 6 x pallets of paint (White, Black, Red, Yellow, Blue and Green), Silver Glitter Gel, 3 brushes (round, flat, and fine), and 2 sponges.



code	price
SFX1194010	£29.95

## Permblood

Permanent realistic wet blood effect for costumes and props - not to be used on skin! Great for creating fresh blood effects on costumes as once it is set, costumes can be laundered and used again without having to reapply the blood effect. Also suitable for application to costumes and props being used when shooting underwater scenes. Similar effect can be achieved by pigmenting the transparent coatings listed on page 53 for larger scale effects. Available in Original (fresh blood) and Dark (dried/old blood). 250ml Jar. Not to be confused with washable ProBlood on page 120.



code	description	price
SFXPMR250	Original	£37.67
SFXPMD250	Dark	£37.67

## RUBBER ICE & GLASS

### Rubber Ice Cubes

These are as realistic as the ones out of your ice tray. Crystal clear on the top and slightly frosted around the sides, each ice cube is ever so slightly different so look just like the real thing even in close ups. They also float in water and make no noise in glass. However, the slight frosting on the outside of these ice cubes means they look their most realistic when dry. N.B. Not to be used in liquids to be drunk from as they are not food-grade.



code	description	weight	price
SFXGIC	Ice Cubes	450g	£57.75

### Rubber Glass Crumb & Shards

Two versions, the crumb version is great for shattered glass effects; The sharp [but safe to handle] irregular shapes make the crumbs highly realistic. Made of clear rubber, each individual 'crumb' is 10mm thick ranging in size from 5 - 30 mm across. For an even finer crumb these can be broken up by hand even further and remain clear and sharp. The shards are also 10 mm thick, but vary from 40 - 90 mm across.



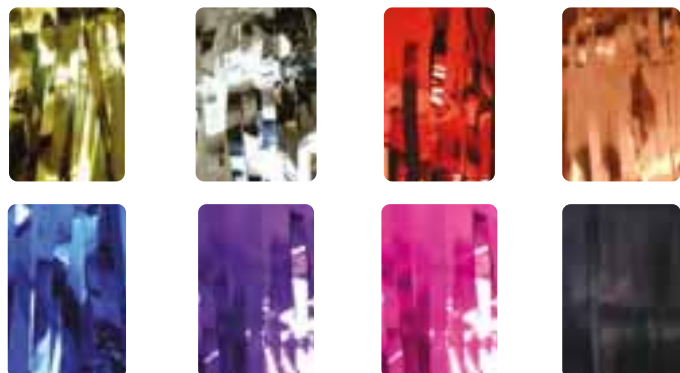
code	description	weight	price
SFXRGCR	Rubber Crumb	450g	£38.50
SFXRGSH	Rubber Glass Shards	450g	£38.50

# DISCO & PARTY

## SLASH CURTAINS

### Budget Slash Curtains

Economically priced slash curtains ideal for parties etc. 910 mm wide with 12 mm slashes. Available in two different drops. Certified as Flame Retardant to BS5867 Type B. Visit our website to access the certificates. Need a longer length? We can order them to any length for a minimum quantity of ten. Please allow 10 days for delivery.



code	Colour	length	width	price
SLIT24G12	Gold Metallic	2.4m	910mm	£10.72
SLIT24S12	Silver Metallic	2.4m	910mm	£10.72
SLIT24R12	Red Metallic	2.4m	910mm	£10.72
SLIT24C12	Copper Metallic	2.4m	910mm	£10.72
SLIT24RB12	Royal Blue Metallic	2.4m	910mm	£10.72
SLIT24P12	Purple Metallic	2.4m	910mm	£10.72
SLIT24CE12	Cerise Metallic	2.4m	910mm	£10.72
SLIT24B12S	Black Satin	2.4m	910mm	£10.72
SLIT48G12	Gold Metallic	4.8m	910mm	£18.16
SLIT48S12	Silver Metallic	4.8m	910mm	£18.16
SLIT48R12	Red Metallic	4.8m	910mm	£18.16
SLIT48C12	Copper Metallic	4.8m	910mm	£18.16
SLIT48RB12	Royal Blue Metallic	4.8m	910mm	£18.16
SLIT48P12	Purple Metallic	4.8m	910mm	£18.16
SLIT48CE12	Cerise Metallic	4.8m	910mm	£18.16
SLIT48B12S	Black Satin	4.8m	910mm	£18.16

## CHINESE CONFETTI

### Chinese Confetti

A neatly packed box full of light tissue rectangles that float very slowly to the ground if released from a theatre grid or thrown from a balcony. Flame retardant. Size: 2" x 1/2".



code	Colour	qty	price
SFXCC8	White	500g	£14.00
SFXCC6	Multi	500g	£12.00
SFXCC7	Red Metallic	500g	£14.00
SFXCC4	Blue	500g	£14.00



White  
SFXCC8



Red  
SFXCC7



Blue  
SFXCC4



Multi  
SFXCC6

## BUBBLE MACHINES

### Bubble Machine

Continuous high output bubbles from a 1.5 litre tank for 30 minutes. SPECIFICATION: Power consumption: 100 W. Weight: 11.5 kg.

code	description	price
SFXB100	Machine	£125.19
SFX80360	Fluid 5L	£11.12





## MIRROR BALLS

### Mirror Balls

Add a spot of glamour with a glistening mirror ball. The 400 mm and the 500 mm mirror balls are professional versions using smaller 5 mm square tile mirrors.

NB: Mirror Balls must be installed in accordance to EN 60598-217. A second safety attachment must be used at all times. The installation must be approved by a competent person before first use. Motors have Euro Shuko plug on an approximately 300 mm lead and are supplied with an UK 13 A adapter.



code	description	diameter	price
SFX60404	200 mm [no motor]	200mm	£14.62
SFX60405	300 mm [no motor]	300mm	£30.04
SFX604083	Motor for above [inc. chain and 2-pin plug]	-	£14.09
SFX60431	400 mm [no motor]	400mm	£82.86
SFX60432	500 mm [no motor]	500mm	£128.50
SFX60411	Motor for above [inc. chain and 2-pin plug]	-	£42.45

## HANDHELD PYROTECHNICS

### Single Electronic Flash Gun

Easily concealed in the hand yet it creates a dramatic effect on a large stage when it shoots a brilliant ball of fire 3 – 4 metres in the air. It requires one AA battery [page 381] and a small piece of Flash Paper and Flash Cotton for each firing.



code	price
SFXMG01	£70.00

### Flint Flasher

This unfortunately named mechanical flash gun uses a small piece of Flash Cotton to create the effect.



code	price
SFXMG04	£38.00

### Electronic Flash Wand

A magician's wand that fires a brilliant ball of fire 3 – 4 metres into the air. It requires two AA batteries [page 381], Flash Cotton and Flash Paper.



code	price
SFXMG11	£96.00

### Flash Cotton & Flash Paper

Flash Cotton burns much quicker than Flash Paper. Flash Cotton creates an instantaneous flash of fire. One of Flash Cotton pack contains enough for at least 10 firings. Flash Paper burns quickly with a bright orange flame and leaves no ash. Each pack of Flash Paper contains 4 sheets 8" x 9". Dry out for 24 hours before use.



code	description	price
SFXFP11	Flash Cotton	£18.00
SFXFP01	Flash Paper	£18.00

## FLAME PASTE

### Flame Paste [Angel Fire]

A flammable paste that can be applied to a suitable surface. It burns with an even orange flame and a small amount of paste burns for a surprisingly long time. The paste is virtually invisible when applied. The paste can be used anywhere a small controllable flame is needed. This paste can be used on stage to simulate a camp fire without the use of flammable liquids or gas. Flame Paste is best extinguished by smothering the container and starving the paste of oxygen. The flame can also be extinguished by blowing the flame out.



code	volume	price
SFXLMFL11	1L	£92.00
SFXLMFL1	2.5L	£159.00

# DRAWING & STENCILLING

## CHARCOAL

### Charcoal

Willow charcoal of a consistent high quality. We stock the largest size of willow which is approx 20 mm diameter! You might need a Charcoal Holder [page 90].



code	description	pack size	price
PAT652	Thin	25 sticks	£4.07
PAT651	Medium	25 sticks	£4.64
PAT650	Charcoal [scene painter's]	12 sticks	£6.19
PAT650ET	Extra Thick	4 sticks	£4.72
PAT650TS	Tree Sticks	each	£3.29
PAT656	Charcoal Pencils	each	£1.74

## CHALK, PENCILS & MARKERS

### Chalk

For throwing at school children.



code	box qty	price
TOL695	100	£7.20

### Pencils

The very best drawing pencils. Made in Cumbria. HB stands for Hard Black. The higher the H number, the harder the pencil and the higher the B number, the blacker [or softer] the pencil. The hardness is made by adding clay to the graphite. Sold individually.

Graphic 2B



HB Pencils



Carpenter's Pencil [Hard]



code	description	Colour	tin qty	price
PAT655	Graphic 2H			£1.54
PAT654	Graphic HB			£1.54
PAT653	Graphic 2B			£1.54
PAT660	Derwent Graphic Pencils [4H to 6B]		12	£17.08
PAT649HB	HB Pencils		12	£4.30
PAT657	Carpenter's Pencil [Hard]	Green		£0.78
PAT658	Carpenter's Pencil [Medium]	Red		£0.78
PAT659	Carpenter's Pencil [Soft]	Blue		£0.78

### Chinagraph Pencils

Finer, more fixed and don't smudge as much. Easily removed with a damp cloth or Amberclens. Good colours. Pre-LEDs, we used to label our cut gels with Chinagraph pencils but be careful, though: the finer point will leave an indentation on gels.



code	Colour	price
PATCGPBK	Black	£2.10
PATCGPRE	Red	£2.10
PATCGPYE	Yellow	£2.10
PATCGPWH	White	£2.10
PATCGPBL	Blue	£2.10

## Rubbers and Pencil Sharpeners



code	description	price
DRWWCFGE	Windsor & Newton Rubber	£2.44
DRWP25001	Canister Pencil Sharpener	£1.45

## Black Pentel Markers

Popular permanent markers.



code	description	price
PAT665	Bullet Point [N50]	£1.95
PAT665C	Chisel Point [N60]	£1.95

## Sharpies

The artist's and celebrity's choice of marker. Permanent on most surfaces, fade and water-resistant, quick drying ink. Also available in retractable. They are incredibly useful little pens!



code	description	price	12+
PATS81107B	3 x Sharpie [fine point]	£1.77	£1.57
PAT713862	Retractable Fine point	£2.39	£2.15

## Metal Marker

Valve action bullet point paint marker for marking metal, glass, plastic etc. Dries in 3 minutes. White.



code	description	price
PAT685	Bullet Point	£8.35

## SCALE RULES AND DRAUGHTING

### Scenery Scale Rule

This triangular section theatre rule features three laser etched scales. It is made of lightweight aluminium with a black finish.

- ✓ Triangular section ✓ Black Anodised ✓ 4 ft imperial markings
- ✓ Three common scales ✓ Flush one end – great for model boxes!
- ✓ Supplied wrapped in tissue in card storage tube ✓ Laser etched



code	description	price
DRWSSR	metric scales 1:25, 1:50, 1:100	£25.00

## Linex Scale Rules

The 382 black aluminium triangular scale rule has coloured identification stripes and 11 divisions. The 325 is popular and offers fantastic value but still has all the metric scales commonly used on theatre plans. The 415 is a small 150 mm flat rule which fits easily in the pocket. The 305 is the professional's choice as it is engine divided, has coloured stripes to quickly identify the scale and is supplied in a strong triangular storage box. The 308 is also engine divided.

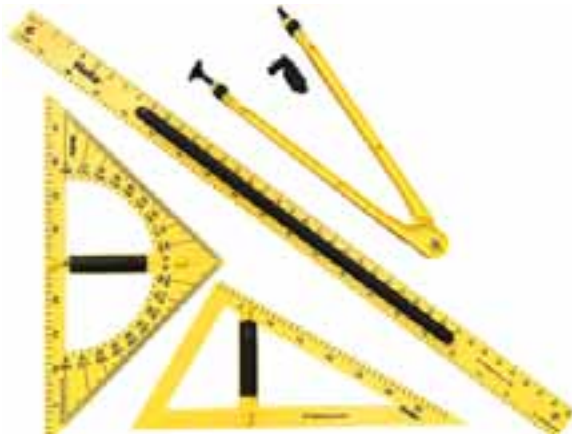


code	description	price
DRW382	382 Black Aluminium Scale Rule, Triangular [metric scales 1:1, 1:2, 1:5, 1:20, 1:50, 1:100, 1:200, 1:500, 1:1000, 1:1250, 1:2500]	£13.87
DRW325	325 College Triangular Scale Rule [metric scales 1:20, 1:25, 1:33 1/3, 1:50, 1:75, 1:100]	£13.10
DRW415	415 Division Divided Scale Rule, Flat 150 mm Pocket Size [metric scales 1:1, 1:20, 1:25, 1:50]	£4.29
DRW308	308 Engine Divided Scale Rule, Triangular [metric scales 1:15, 1:20, 1:25, 1:50, 1:75, 1:100]	£7.25

## GIANT DRAWING INSTRUMENTS

### Giant Drawing Instruments

Very useful for marking out scenery prior to painting. Choose the handy foldaway kit for 1 x 1 metre ruler, 1 x 60° Set Square, 1 x 45° Set Square with protractor scale & 1 x Compass all in a neat briefcase style box. Great for the travelling scenic or supply teachers. We also offer a Metre Ruler, Protractor and compass available to buy separately, perfect for large scale drawing.



code	description	price
DRWBCMP	Blackboard Compass	£18.74
DRWBPR	Blackboard Protractor	£9.79
DRWBMTR	Blackboard Metre Ruler	£11.74
DRWBSET	Blackboard Drawing Set 4 pc	£48.41

See also Großmann giant drawing instruments on page 90. For marking out treads and raked stages take a look at the Roll-up Straight Edge and Roll-up T-Square [page 316].

## NOT STRAIGHT EDGES

### Flexible Curve

Containing a flexible lead core surrounded by vinyl. Raised edged for ink ruling or pencil lines. Suitable for drawing curves as small as 15 mm. Metric markings both sides.



code	length	price
DRWFC60N	600mm	£10.99

## STRAIGHT EDGES

### 8' Aluminium Feather Edge

Long hollow aluminium straight edge with one feather edge. Ideal for marking out large pieces of scenery and sheets of plywood and almost certainly truer than that bit of scrap 3x1 you've been eyeing up. Tubular handles [not included, see page 271] can be self-tapped onto the back to provide an easier grip for working vertically on paint frames.



code	length	length	width	height	price
TOLFAIFE8	8'	2438mm	93mm	25mm	£56.65

### Carbon Steel Straight Edge

Surface ground all over with an accurately finished bevel edge. Accuracy is 0.01% of the length of the straight edge. Ideal for model making, propwork and any job that requires accurate marking or cutting out.



code	length	price	Tradeline
MAU17001	1m	£64.24	£59.95

### Safety Rule

With a unique M profile which keeps the fingers well away from any knife edge when used for cutting or scoring card etc. Stainless steel with both metric and imperial scales.



code	length	length	price
MAU1773012	12"	300mm	£3.38



# DRAWING & STENCILLING

## CUTTING TOOLS

### Swann Morton ACM Box Set

This is a comprehensive set of 13 precision ground carbon steel blades, made by one of the world's leading surgical blade manufacturers to the same high surgical quality for which the company is renowned. With easy blade changing, the 10 blade shapes offer cutting edge versatility all from one set. Supplied in plastic case with: 3 handles, two No.2, three No.11, one each of No's 7, 10, 16, 17, 18, 22, 24 & 28 blades.



code	description	price
TOL9101ACM	ACM Box Set	£35.95

### Olfa Rotary Circle Cutter With Ratchet System

Rotary Circle Cutter with Ratchet System adjusts to cut circle diameters from 4cm to 22cm. Great for model makers and cutting rounded corners on fabric. Sharp needle point secures the centre of the circle/curve and you make your cut with the ratcheting arm. To prevent marking on delicate surfaces there is a cap for the needle included. Made in Japan  
Specification: Blade Diameter: 18mm



code	price
TOLCMP3	£18.05

### Olfa Blade For Rotary Cutters 18mm, Pack of 2

Spare 18mm Blades for Ratchet Rotary Cutter. Made in Japan. 2 Blades Per Pack



code	price
TOLRB182	£5.55

### Olfa Self-Healing Cutting Mat

Ideal for cutting stencils and model making without wrecking your table!  
Dimensions: 450 x 600 mm [slightly larger than A2]



code	length	width	price
TOLCMA2RC	600mm	450mm	£29.35

## STENCIL PAPER

### Oiled Manila Stencil Paper

We tried something different, it didn't go down well, so we are back to this traditional orangey-brown stencil paper with the wonderful smell. 275 gsm. See page 333 for Scalpels. See also page 223 for Tarred Marlin which has no relation to stencil paper but it smells good, too.



code	length	width	length	width	price
PAT692	30"	20"	762mm	508mm	£6.54

### Mylar Stencil Paper

This is a tough transparent polyester film which can be cut with a scalpel or a hot knife. It has the advantage of allowing the artist to see the design work whilst working on the stencil.



code	description	length	width	thickness	price
PAT695	Sheet	450mm	600mm	125microns	£2.24
PAT695R	Roll	10m	600mm		£29.98

### Hot Pen

Quickly cuts complex stencils in the Mylar stencil paper.



code	description	price
PAT698	To cut Mylar Stencils	£29.98
PAT699	Spare pen stylus	£7.58

### Stencils

Non-interlocking zinc stencils available in numbers or letters.



code	description	size	price
DRWSTNL112	Letter	1 1/2"	£16.74
DRWSTNF112	Number	1 1/2"	£6.23
DRWSTNL212	Letter	2 1/2"	£23.77
DRWSTNF212	Number	2 1/2"	£8.66

## PAPER & CARD

### Tracing Paper



code	weight	length	width	length	width	price
PAT693	90g	25m	841mm	25m	841mm	£31.05

## Brown Kraft Paper

Strong paper made by the Kraft process. Paper weight: 90 gsm. Roll weight: 18.5 kg. Roll length is approximate [+/- 10%]



code	length	width	price
PAT694	200m	900mm	£45.50

## Bogus Paper

Bogus paper is a recycled versatile, multipurpose, economical grey paper that provides great absorbency. It has a slightly rough but soft finish. Since it absorbs so much moisture it is a fantastic product for covering paint floors prior to laying out cloths. We've had some problems with supply, but will keep hunting for it.

- ✓ Avoids water pooling up under gauzes and helps to prevent stains caused by fireproofing chemicals
- ✓ Protects your paint floor from textures and stains
- ✓ Aids drying time of cloths
- ✓ Lays out flatter than polythene sheeting [see 386].
- ✓ Extra wide size 1,524 mm [60"] and heaviest weight available!

code	description	length	area	length	area	price
SAFBOGUS60	Per cut metre	3.28ft	16.4sq ft	1m	1.5m <sup>2</sup>	£1.20
SAFBOGUS60D	Full Roll	515ft	2575sq ft	157m	235.5m <sup>2</sup>	£128.00



## Black Foam Sheet

This board is ideal for making model boxes. It is easy to cut, ultra lightweight and makes strong and rigid constructions. Corners can be temporarily fixed with pins so large models can be dismantled for transportation. Unfortunately, if you want a single sheet you will need to buy it from our trade counter because of the risk of damage when couriered. Pack quantities can be delivered. Sheet size A2 [420 x 594 mm]. 5 mm thick.



code	length	width	thickness	price	20+
PROWF7002	594mm	420mm	5mm	£3.98	£3.58

## SPECIALIST CALCULATORS

### Construction Master Pro V3.1

Not just an ordinary calculator! This immensely useful machine is an advanced feet-inch-fraction calculator with instant metric conversion. If you are working from imperial drawings you can instantly find out how many square metres in a 16' 3 13/16" Ø revolve. The perfect calculator for production managers, scenic carpenters and engineers, draughtsmen and women, scenic artists, stage managers and anyone who works backstage. Highly recommended with proven hard service.

- ✓ Instantly converts imperial/metric including fractions up to 1/64"
- ✓ Includes cubic/cylinder/revolve/stair conversions and calculations
- ✓ Supplied in a rugged hard case for protection with: easy to use field guide plus full instruction booklet.



code	description	price
DRWCMPRO	Model 4065 v3.1	£49.00

### Project Calculator

This straightforward calculator will work out how much paint you will need to buy from us – saving you money and doing us no favours at all. Just enter the area and it will say how many litres, tiles, bricks, rolls of wallpaper etc. are needed. Great for quoting.



code	price
DRW8528	£18.00

## SKETCH BOOKS

### Black Sketch/Note Books

These strong hardback Daler Rowney books have 62 x 150 g/ m<sup>2</sup> acid-free cartridge paper leaves. They make excellent books for taking production notes or making sketches, or making sketches when you should be taking production notes.

code	description	page	price
DRW701	A4 [portrait]	150g/m <sup>2</sup>	£10.42
DRW702	A5 [landscape]	150g/m <sup>2</sup>	£8.29



# EXPANDING FOAMS

## Expanding Foams

Flints stocks four types of expanding foam to suit most purposes. Some foams purchased from builder's merchants are open cell foams which absorb water like a sponge. Our rigid foams are either closed cell or predominately closed cell with very low moisture absorption. The Single Component Foam is designed as a gap filler and is flame retardant. It can be used to glue large blocks of polystyrene where gap filling is needed. The Two-Part Pouring Foam can be poured into moulds. Froth-Pak has the advantage of being spray applied so it can be used to thicken up tree armatures, insulate steel containers or hulls, or provide stiffness to vacuum-formed panels. The Flex Foam remains soft and can be used for costume props. With all the foams read the instructions carefully and pay particular attention to the temperature of the material which may take time to warm through.

### SINGLE-COMPONENT POLYURETHANE FOAM

#### Acoustic Fire Rated Straw Foam

A one-component moisture curing polyurethane foam which seals, fills, fixes, bonds and insulates most construction materials. Once cured it becomes a semi-rigid water-resistant rotproof foam which can be sawn, cut, moulded, painted or plastered over. It can be used to bond and fill blocks of polystyrene but it is not suitable on thin sheets. It is tack-free in 9 minutes and cuttable after one hour. Full foam setting time is 12 hours. Yields approximately 38 litres when freely expanded. The foam has been tested to flame retardancy using the general principles of BS 476:1987 Part 20 on specimens of floor and wall mounted linear gap sealing systems. A flame retardancy of 300 minutes was achieved for some gap dimensions with incorporation of a mineral fibre core. Completely water resistant. Pink colour. Acoustic rated to W=db59.



code  
ADH057

price  
£13.30

### FLINTS RIGID POLYURETHANE FOAM

#### Flints Rigid Polyurethane Foam

Low density rigid 2 part foam used to cast lightweight props or fill voids to add structural integrity. Contains no ozone depleting CFC's or HCFC's. Simple mix ratio of 1:1 by weight. The 2 parts are best mixed together by using a paint mixing paddle attached to a drill. Hand mixing is also perfectly fine but it's worth premixing part A to aerate it before mixing with part B. As soon as both parts have been fully mixed, it should be poured into your mould/cavity before any expansion has begun.

NEW

The foam can be "free risen" meaning the foam can rise if not restricted but for best results, especially if you are casting something with lots of detail, it's worth restricting the rise so that the foam expands into every crevice. For example, in the image we have a 1-part mould of a stage weight that we have laid a sheet of clear acrylic over to restrict how much the foam can expand. The acrylic has a predrilled hole as it's still important for the foam to have some way of venting.

Optimal temperature for mixing 2-part foam is 18-23°C, however cure times can vary a lot depending on ambient temperatures and amount of material mixed. As a rule, lower temperatures = slower curing, Higher temperatures = faster curing, small mixtures = slower curing, larger mixtures = faster curing. Top Tip: We have found that warming the mould with a heat gun (warm not scorching!) prior to pouring in the 2 part mixture really helps the foam to develop a smooth 'skin'.

SPECIFICATION: At 20°C, Cream Time: 25 -35 seconds, (from mixing to start of rise), Rise Time: 180 - 230 seconds (start of mixing to end of rise). The foam should be tack free at around 6 minutes but best left a couple hours before demoulding. Free rise density of cured foam: 48 - 50 kg/M3



code	weight	price
PRORIGIDF2K	2kg	£39.85
PRORIGIDF10K	10kg	£119.50

### SPRAY POLYURETHANE FOAM

#### Froth-Pak™

Froth-Pak is a two part spray applied polyurethane foam system, now HFC-free, which means that it does not contain ozone-depleting chemicals.

Being spray applied, the foam can be used where pouring foam would be uncontrollable. Flints are distributors of this excellent product and offer it at very competitive prices.

Froth-Pak is perfect as a sculpting medium for carving. Use it to quickly to create rock faces or spray it onto tree armatures. It will also add structural strength to your constructions. It can be used as an insulation material to cut condensation, reduce sound and hold heat. Ideal for insulation of steel hulls and cooling boxes.

Please spray a small test amount into an empty carton before getting started. It should be tack-free within 60 seconds, if not check gun is clear and working correctly, and tanks are sufficiently warm. Also take note of the colour, then while you're spraying keep a constant eye on it; if the spray lightens or darkens it could indicate a blockage in one of the tubes or nozzles. Do not continue to use as it may not set. Please note: Ruthlessly ensure temperature conditions are met. The tank contents must be at least 24°C. Do not use product if under this temperature as it will result in improper mixing of the chemicals. Ambient temperatures can be lower but the contents must be warm.

SPECIFICATIONS: Density: 28 kg/m³, Rise Time: 30 seconds, Froth-Pak 600 kit weight: 49.75 kg (ISO Tank: 25.25 kg, POL Tank: 23.5 kg, Gun Kit: 1kg) Foam Produced: 46 ft³ (1.3 m³), Froth-Pak 180 Kit weight: 11.9 kg, Foam Produced: 14 ft³ (0.4 m³) Reaction to Fire: EN 13501-1 (Class E), No harmful HCFCs or HFCs



code	description	price
PROFP180NK	Froth Pak 180 Kit c/w gun	£455.38
PROFP600NK	Froth Pak 600 Tanks ISO & Poly Kit	£845.00
PRO8010223	Froth Pak 600 ISO Tank A only	£367.85
PRO8010224	Froth Pak 600 POL Tank B only	£367.85
PRO8010240	Froth Pak GhA15 Gun Assembly	£129.95
PRO8010222	Froth Pak 180 Tank without gun	£359.00
PRO8010239	Froth Pak GH9 Gun Assembly	£99.98
PRO8010243	Froth Pak Cone Nozzle	£2.54
PRO8010242	Froth Pak Fan Nozzle	£2.54



## TWO-COMPONENT SOFT FOAM

**Flints Soft Foam**

Soft, pillowy, memory foam mattress-y, 2-part Polyurethane Foam for prop making. Formulated to be soft but also have a smooth skin for minimal finishing. Perfect for light weight soft forms on costume, gap filling, or prop weapons. If you are moulding something like a sword then you might want to try the Black Gun Foam as it is semi-flexible and would hold a form without drooping. However, this soft foam would make the perfect head of a hammer or anything that might make contact with another performer without causing injury.

SPECIFICATIONS: Mix Ratio: 2(A):1(B), Timings vary with 2 part foams depending on volume mixed and ambient temperatures, For best results use at 20 °C, Free Rise Density: 0.10 g/ml to 0.15 g/ml, Cream Time: 20 - 40 seconds, Rise Time: 3 - 6 minutes, Demould Time: 20 minutes, Full Cure: 12 hours

code	weight	price
PROSOFTFOAM3K	3kg	£49.85
PROSOFTFOAM15K	15kg	£214.85



NEW

**Flints Black Gun Foam**

Make your own prop stage weight! Two Part Polyurethane Semi - Flexible Foam known as 'Gun Foam' as, when curing, it develops a thick, semi-gloss, smooth skin that replicates the look and texture of weaponry & steel more generally. This means it requires little finishing, and the black pigment is dispersed throughout the foam so any damage wouldn't be immediately obvious.

In writing descriptions for this catalogue, I was curious to see what kind of job ChatGPT might do so I gave the main bullet points and added in "also add in some kind of joke around the prop stage weight, somehow referencing simulacra" And this is what it came up with:

"In the whimsical world of art theory, a black foam prop stage weight is the ultimate prankster in the game of simulacra. It struts around the stage, flexing its non-existent muscles, pretending to be as heavy as its steel counterpart. But alas, it's all smoke and mirrors or should we say foam and feathers? It's the embodiment of "fake it till you make it," a lightweight imposter in a world that values gravitas. Yet, in its deceptive lightness, it raises profound questions about reality and perception, making us wonder if anything is truly as it seems."

Clearly, Jack's out of a job....

SPECIFICATIONS: Mix ratio: (A)3:1(B), Timings vary with 2 part foams depending on volume mixed and ambient temperatures, For best results use at 20 °C, Cream Time: 15-25 seconds, Rise Time: 2-3 minutes, Demould: 20 minutes, Full cure: 12 hours, Free rise density: 0.15 g/ml - 0.025g/ml

code	weight	price
PROGUNBLK4K	4kg	£65.00



NEW

**FlexFoam-IT! X**

A two-part soft foam with a very fine cell structure ideally suited for soft costume props. Simply mix part A and part B in equal quantities by volume and pour into the lowest point in your mould. The mould should have been treated with a nonsilicone Release Agent [page 142]. It will expand to approximately 6 times the original volume and is tack-free in 30 minutes. Demould in 2 hours. Pot life is 50 seconds. Supplied complete with full instructions.

code	weight	list price
PR0800	880g	£26.25
PR0801	7.08kg	£166.98



## WATER-BASED GLASS FIBRE SYSTEM

# JESMONITE<sup>®</sup>

MADE FROM

### Jesmonite Water-based Glass Fibre System

Jesmonite is a water-based system with no harmful solvents. You can wash your brushes in water. It can even be applied directly to polystyrene. If using moulds, the lack of solvents means your moulds will last virtually indefinitely. Jesmonite AC100, AC300 and AC730 have BS 476 Part 6 and Part 7 Class 0 fire certificates so they are ideal for use in theatres and for theming applications. AC100 and AC300 both hold B-s1-d0 EN 13501-1 Fire Classification, and AC730 has an A2-s1-d0 EN 13501-1 Fire Classification. Work can be carried out almost anywhere as there are no requirements for expensive fume extraction systems. It has very little odour so staff and public can continue with little disruption. The products are supplied as a liquid and powder which are mixed together using a high shear mixing blade in an electric drill at around 1,000 rpm for about 45 seconds. The resulting mix can be poured into a mould or it can be used to form a strong laminate. The mix can be stiffened for vertical surfaces with the addition of a little Thixotrope or retarded by adding Retarder [page 132].

### Safety Data

Jesmonite Acrylic Composites are classified as low hazard products with little or no toxicity. First time users should ask for safety data sheets or download them from flints.co.uk. Operatives should be provided with:

- a) Eye protection – goggles or glasses [page 362]
- b) Dust respirators [page 364]
- c) Hand protection – rubber gloves [page 365]



### How much will I need?

To estimate coverage, a 5 mm thick laminated panel in Jesmonite will weigh about 8.725 kg per m<sup>2</sup> when wet and 8.25 kg per m<sup>2</sup> when dry. Therefore, a 70 kg kit will cover about 8 m<sup>2</sup>.

For accurate measuring, why not buy some scales? [page 143]



## JESMONITE AC100

### AC100

This is harder and has a higher impact strength than AC300; it is better suited to larger structural pieces. Jesmonite recommend it for interior or exterior use, but it's best practice to use a sealer for exterior use to protect the finish. It is fire resistant, having achieved a Class 0 fire rating under UK Building Regulations BS 476 Part 6 and Part 7, and B-s1-d0 EN 13501-1. Normal casting and laminating requires a mix ratio of 2.5 parts Jesmonite powder to resin by weight. If you are using Jesmonite to coat large areas of polystyrene, use Jesmonite Retarder to increase working time. AC100 has always been the most popular system in the Jesmonite range so they have now included a new 10 kg resin so we can now offer a convenient 35 kg kit. \* Powder is supplied in bags. Resin is supplied in a 120 kg drum. Bulk quantities are sent direct to your workshop on a pallet, please allow 2-3 days. Price includes UK mainland delivery.



code	description	powder	resin	kit size	price
JESAC100175K	Small Kit	12.5kg	5kg	17.5kg	£89.95
JESAC10035K <b>NEW</b>	Medium Kit	25kg	10kg	35kg	£139.95
JESAC10070K	Large Kit	2 x 25kg	20kg	70kg	£262.07
JESACPOW250	Powder only	2.5kg			£14.41
JESACPOW125	Powder only	12.5kg			£38.92
JESACPOW25	Powder only	25kg			£45.00
JESAC1001	Resin only		1kg		£15.00
JESAC1005	Resin only		5kg		£54.00
JESAC10010 <b>NEW</b>	Resin only		10kg		£99.50
JESAC10020R	Resin only		20kg		£206.84
code	description	powder	resin	kit size	price
JESAC100420K	Bulk kit	12 x 25kg	120kg	420kg	£1,155.09
JESAC100120	Resin only		120kg		£945.88

**AC100 Tea Light Holder Mini Kit**

Never tried Jesmonite and want to do some sampling? These new starter kits give you all the components for you to try casting with Jesmonite with a selection of pigments on a small scale. This kit contains:

- ✓ 250g Jesmonite Base
- ✓ 100ml Jesmonite Liquid
- ✓ 2 gloves
- ✓ 2 stirring sticks
- ✓ 6 pigments 2ml
- ✓ 1 mould
- ✓ 1 pipet

As well as a step by step guide to get you going.



code

JESAC100MIC2

NEW

price

£39.00

**AC100 Jesmonite Coasters Mini Kit**

This kit gives you everything you need to make some Jesmonite Coasters, passive aggressively hand them out to your co workers who leave coffee rings around the workshop or start your own Etsy business.

This kit contains:

- ✓ 250g Jesmonite Base
- ✓ 100ml Jesmonite Liquid
- ✓ 2 gloves
- ✓ 2 stirring sticks
- ✓ 6 pigments 2ml
- ✓ 1 mould
- ✓ 1 pipet



code

JESAC100MINI

NEW

price

£39.00

**JESMONITE AC300****AC300**

A good value product which is fire resistant, having achieved a Class 0 fire rating under UK Building Regulations BS 476 Part 6 and Part 7, and B-s1-d0 EN 13501-1. Perfect for all indoor casting and laminating applications and for short-term use out-of-doors [see AC100 above for external use]. Normal casting and laminating requires a mix ratio of 2.5 parts Jesmonite Powder to Resin by weight but a mix ratio of 3:1 is often used for covering directly onto polystyrene. Sadly AC300 has been discontinued in smaller sizes but for large projects we can supply a bulk 420 kg kit of AC300 delivered on a pallet direct to your workshop. The powder on these bulk deliveries is supplied in 12 x 25 kg bags and should be used within three months. The resin is supplied in a 120 kg drum. Our price includes UK mainland delivery. Please contact customer services for lead times.



code	description	powder	resin	kit	price
JESAC300420K	Bulk Kit	12 x 25kg	120kg	420kg	£1,262.17

**JESMONITE AC730 STONE FINISHES****Jesmonite AC730 Stone Finishes**

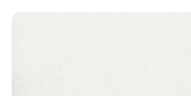
Jesmonite AC730 is a fast setting acrylic-modified cement-based composite. The system is designed for glass-reinforced decorative structures, and can also be used for small castings. It is chemically compensated against shrinkage and is of low permeability. AC730 is durable in all conditions of external weathering including water features. The compound has virtually no free-lime content, and has low alkalinity, leading to major reductions in efflorescence in comparison with ordinary Portland cement systems. The material contains a fine decorative aggregate and powder pigments, carefully controlled to give a consistent decorative surface finish after treatment with a proprietary brick cleaner, Acid Etch [page 135], or vinegar for a more eco friendly option. AC730 is available in eight stone finishes [sample boxes available online] and has BS 476 Part 6 and Part 7 Class 0 fire certificates as well as A2-s1-d0 EN 13501-1 Fire Classification.

We've had lots of requests to buy the powders and resin separately for this system, so we have decided to let you pick and choose. For bulk quantities please call us for a quote.

The 30kg kit consists of 25kg powder and 5kg resin. The 6kg kit consists of 5kg powder and 1kg resin.



Yellow Sandstone



White Marble



Silver/Grey Granite



Portland Stone



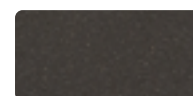
Bath Stone



Natural Stone



Old Terracotta



Black Charcoal

Material [Stone Finishes]	code	6kg	code	30kg
Yellow Sandstone	JESFIL136K	£31.86	JESFIL130K	£119.49
White Marble	JESFIL236K	£33.37	JESFIL230K	£122.40
Silver/Grey Granite	JESFIL336K	£33.37	JESFIL330K	£122.40
Portland Stone	JESFIL436K	£33.37	JESFIL430K	£122.40
Bath Stone	JESFIL536K	£31.86	JESFIL530K	£119.49
Natural Stone	JESFIL636K	£31.86	JESFIL630K	£119.49
Old Terracotta	JESFIL736K	£33.37	JESFIL730K	£122.40
Black Charcoal	JESFIL936K	£33.37	JESFIL930K	£122.40
Material [Stone Powders]	code	5kg	code	25kg
Yellow Sandstone	JESFIL130S	£19.25	JESFIL132S	£66.15
White Marble	JESFIL230S	£20.84	JESFIL232S	£69.21
Silver/Grey Granite	JESFIL330S	£20.84	JESFIL332S	£69.21
Portland Stone	JESFIL430S	£20.84	JESFIL432S	£69.21
Bath Stone	JESFIL530S	£19.25	JESFIL532S	£66.15
Natural Stone	JESFIL630S	£19.25	JESFIL632S	£66.15
Old Terracotta	JESFIL730S	£20.84	JESFIL732S	£69.21
Black Charcoal	JESFIL930S	£20.84	JESFIL932S	£69.21
Material [Resin]	code	weight	price	
Resin	JESFILRES1	1kg	£14.29	
Resin	JESFILRES5	5kg	£59.63	

**Jesmonite AC730 Flex Resin**

When working with especially large moulds, makers sometimes prefer having a little more flex in their gel coat. This Flex version of the resin is offered to achieve this, but should not be used for the bulk of the casting.

code	weight	price
JESRESFLEX1	1kg	£12.98
JESRESFLEX5	5kg	£59.62



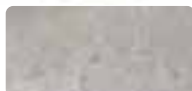
## JESMONITE AC930

### Jesmonite AC930

Much like AC730, AC930 is an acrylic modified cement-based composite with a mix ratio of 5:1 (base to liquid). Suitable for use for castings of all sizes in all conditions, floor tiles, water features, you name it! The main difference between AC930 & 730 is that AC930 has a pale, light grey finish that mimics the finish of cement and concrete. The benefit of using AC930 over using standard Portland cement is that AC930 has low alkalinity and none of the efflorescence associated with ordinary cement based systems as well as the ability to cast thin panels with exceptional strength by using glass fibre reinforcement. Previously only available in bulk, we jumped at the chance to stock these smaller sizes as we are often asked about concrete finishes in Jesmonite which would require the addition of pigments and/or aggregates in the other systems.

SPECIFICATION: Wet Density: 1950 kg/m<sup>3</sup>, Dry Density: 1850 kg/m<sup>3</sup>, Water uptake/porosity: 2.26% (BS EN 1170-6), Freeze-thaw resistance: 300 cycles (DD CEN/TS 12390-9), Dimensional stability: Shrinkage = 0.83, Expansion = 1.28 (BS EN 1170-7), Weathering/durability: 1008 Hrs - No significant change (BS EN ISO 4982), Compressive strength: 56Mpa (N/mm<sup>2</sup>) (BS EN 12390-3), Flexural strength: LOP 8.9 MPa MOR 26.3 MPa (BS EN 1170-5)

code	weight	price
JESAC93001L	1kg	£15.00
JESAC93005L	5kg	£65.00
JESAC93005B	5kg	£17.00
JESAC93025B	25kg	£65.00
JESAC93006K	6kg	£30.40
JESAC93030K	30kg	£116.63



## Bosch GP014 CE 240 V Professional Polisher

Particularly useful when combined with the tapered thread and wire brush listed.

- ✓ 6-stage speed pre-selection for working on a wide variety of materials
- ✓ Plastic-shielded gear housing with improved insulation
- ✓ Specially developed air inlets ensure optimum motor cooling for a long lifetime
- ✓ D-handle for easy grip adjustment in different work positions
- ✓ Triple-control safety switch for controlled switching-on of the machine
- ✓ Cut-out carbon brushes for a high level of motor protection.

Specifications: Rated input power: 1,400 W. No-load speed: 750 - 3,000 rpm. Power output: 800 W. Grinding spindle thread: M14. Rubber sanding plate Ø: 180 mm. Wire cup brush Ø: 100 mm. Cup wheel Ø: 180 mm. Polishing sponge Ø: 160 mm. Surface brush Ø: 175 mm. Weight: 2.5 kg. Supplied in a carton with: auxiliary handle and D-handle.



code	description	price
POWGP014CE	Bosch GP014 CE	£179.00

## Wire Brush Wheel and Tapered Cone Adapter

The cone bites into the wooden core of the wheel allowing it to be attached to the polisher above - much faster than hand polishing with wire wool! Wire brush wheel wood core Ø 50 mm



code	description	price
POWM14TC	Tapered cone adapter [M14 internal thread]	£39.49
ABR120ST	Wire brush wheel [120 mm Ø x 16 mm. 0.08 mm steel wire]	£31.25

## JESMONITE FLEX METAL GEL COATS

### Jesmonite Flex Metal Gel Coats

Jesmonite Flex Metal Gel Coats are supplied as kits in four finishes: Bronze, Silver Bronze, Copper, and Brass. They are designed to create a metal gel coat that can be applied into moulds, or onto coated substrates such as polystyrene, pre-coated with AC730. This is an extremely economical way of achieving beautiful metal finishes at a fraction of the cost. The Flex Metal Gel Coat can be reinforced using any of the AC730 Stone Finishes and quadraxial fabric. To achieve the best results the Flex Metal Gel Coats should be polished once removed from the mould. Please note, if you cannot brush the gel coat into a mould, but instead need to pour, you need to use the Metal Fillers in combination with the AC100 or AC300 systems.



Bronze



Copper



Brass



Silver Bronze



code	Material	weight	price
JESFMBR06	Bronze	650g	£36.06
JESFMCOP6	Copper	650g	£36.06
JESFMBRA6	Brass	650g	£36.06
JESFMSBR06	Silver Bronze	650g	£70.33
JESFMBR03	Bronze	3.25kg	£122.57
JESFMCOP3	Copper	3.25kg	£122.57
JESFMBRA3	Brass	3.25kg	£122.57
JESFMSBR03	Silver Bronze	3.25kg	£276.17

## JESMONITE CONTROL AGENTS

### Jesmonite Retarder

The pot life of the mixed Jesmonite at 15 - 18° C is 8 - 15 minutes. This can be extended up to 30 minutes by adding 2 - 8 g of retarder per kg prior to adding the powder. However, a small test is recommended, as the precise timing is dependent on both temperature and mix size.



code	description	weight	price
JESIR	AC100 and AC300	1kg	£10.09
JES5R	AC100 and AC300	5kg	£34.09
JESIR730	AC730	1kg	£10.75
JES5R730	AC730	5kg	£34.09

## Jesmonite Thixotrope

Used in the preparation of AC100 and AC300 gel coats to control viscosity so that the material will not slump or drape on vertical surfaces. Thixotrope can also be used to make the material into a paste, which can be used as a filler for repair, or a jointing paste for bonding two laminates together. Add drop by drop until the desired consistency is achieved – typically 2 - 6 g per kilo of mix. [Not to be used with the AC730 Stone Finishes].



code	weight	price
JES1TN	1kg	£19.76
JES5TH	5kg	£80.61

## Jesmonite Super Plasticiser

AC730 & new AC930 are both quite dry mixes so to help with flow without adding extra liquid base or water, use Super Plasticiser. Addition rate of 8 - 12 g per kg of mix. Do not exceed the recommended addition rate as it could cause your mix to separate.



code	weight	price
JESSP250	250g	£9.30
JESSPI	1kg	£17.05

## BOOKS ON MOULDMAKING AND CASTING

### Mouldmaking and Casting

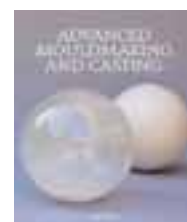
[Nick Brooks] A technical manual with step-by-step illustrations explaining the materials required and the processes involved for a wide range of mouldmaking techniques. Especially useful on silicone moulds and casting techniques. For propmakers, model makers, and sculptors.



code	price
BKSMC	£22.00

### Advanced Mouldmaking and Casting

[Nick Brooks] Aimed equally at the student and the professional wishing to further their skill base, this book provides an invaluable learning and reference tool for the studio or workshop of any artist, model maker, or designer.



code	price
BKS262	£19.95

## JESMONITE COMPOSITE PIGMENTS

### Jesmonite Composite Pigments

Add up to 20 g per kilo of the total mix. We stock a 200 g pot size for smaller jobs. As Jesmonite is water-based it is tempting to tint it with water-based scenic paints. However, this is not to be advised as they can be detrimental to the curing chemistry.



Colour	code	200g	code	1kg
White	JESIWHT2	£11.15	JESIWHT	£25.46
Black	JESIBLK2	£8.65	JESIBLK	£19.49
Red Oxide	JESIRO2	£8.65	JESIRO	£19.37
Yellow Oxide	JESIWO2	£7.87	JESIWO	£17.56
Terracotta	JESIT2N	£8.79	JESITN	£19.76
Bright Red	JESIBR2	£16.02	JESIBR	£36.68
Blue	JESIB2	£12.40	JESIB	£28.30
Bright Yellow	JESIBY2	£12.91	JESIBY	£29.72
Green	JESIG2	£14.22	JESIG	£32.55
Coade Brown	JESIC2N <small>NEW</small>	£10.72	JESICN <small>NEW</small>	£24.16
Orange	JESIOR2 <small>NEW</small>	£15.50	JESIOR <small>NEW</small>	£35.53
Pink	JESIP2 <small>NEW</small>	£21.30	JESIP <small>NEW</small>	£48.81
Purple	JESIPU2 <small>NEW</small>	£29.95	JESIPU <small>NEW</small>	£68.84

## JESMONITE DECORATIVE PAINTS

### Jesmonite Decorative Paints

New Decorative Paints from Jesmonite!

Great for achieving decorative, shimmering metallic finishes on Jesmonite. These sol-silicate based paints can be applied neat for best coverage or mixed with a dilution agent (included) to produce washes or translucent finishes. In testing we've found it's best applied using a sponge, dabbing it on the surface of the Jesmonite a little at a time. Once dry, the surface is very durable, suitable for indoor or outdoor applications as it is water repellent, UV stable & lightfast. A little goes a long way so use sparingly. Clean up with soap and water.



code	Colour	volume	price
JESDPBO	Burnt Orange	30ml	£11.43
JESDPGH	Golden Honey	30ml	£11.43
JESDPLR	Lava Red	30ml	£11.43
JESDPMS	Midnight Silver	30ml	£11.43
JESDPDA	Dilution Agent	30ml	£4.25

## JESMONITE METAL FILLERS

### Metallic Fillers

In addition to the AC100 and AC300 ranges, to give a decorative metal finish. If you wish to have a cleaner metal finish we would recommend going for a Flex Metal Gel Coat [previous page] however, if you are unable to brush into your mould and instead need to pour, these metal fillers give you that option with the AC100 or AC300 systems. They can be added to either just the gel coats, or to the whole composite. Add to a mix with an adjusted ratio to optimise the filler loading level. Jesmonite recommend the following ratio: liquids 300 g : base 600 g : metal filler 700 - 1000 g. Once objects are de-moulded and dried, the surface can be burnished with 000 Wire Wool (see abrasives page 314) to bring out the metallic finish, alternatively you can machine polish [see page 132]. It's then recommended to seal with a wax polish or sealer [see next page].



Bronze

Copper

Brass

code	Material	weight	price
JESMFBRO1	Bronze	1kg	£42.57
JESMFCOP1	Copper	1kg	£49.70
JESMFBRA1	Brass	1kg	£42.63
JESMFBRO5	Bronze	5kg	£189.32
JESMFCOP5	Copper	5kg	£206.09
JESMFBRA5	Brass	5kg	£186.09

### Like a demonstration?

Flints can organise a demonstration for interested groups.



## JESMONITE REINFORCEMENTS

### Quadraxial Stitched Glass Fabric

Conventional glass matt fabrics are held together with a weak adhesive. The strong solvents in conventional resin systems will break down the adhesive so the fabric becomes pliable and is easy to use. As Jesmonite contains no solvents, the fabric would remain stiff and unworkable. Quadraxial fabric has been specially developed with no adhesives for use with Jesmonite. It can be easily moulded into complex shapes and will resist high impacts. The open weave of the fabric makes it very easy to wet through. Generally two layers are required for a laminate 5 - 6 mm thick. The composite between each layer can be mixed with 6 mm chopped glass strands to form a thick paste which will separate the two layers of quadraxial fabric creating a rigid truss effect.



code	weight	length	width	area	price
JES25QGF	220g/m <sup>2</sup>	20m	1.25m	25m <sup>2</sup>	£112.50
JES125QGFR	220g/m <sup>2</sup>	100m	1.25m	125m <sup>2</sup>	£519.33
JESIQGF	220g/m <sup>2</sup>	per linear m	1.25m		£7.98

### Chopped Glass Shards

These can be mixed with the composite [2.5% by weight] to act as reinforcement between the two layers of glass cloth when laminating. 1% by weight can be added to reinforce castings. May also be used with solvent-based systems.



code	strand length	qty	price
JESCS6	6mm	1kg	£13.43
JESC13	12mm	1kg	£13.43

### PVA Fibres

PVA fibres are added to Jesmonite AC730 [page 131] as an alternative to glass fibres in all cast products such as garden ornaments and cast decorative panels. They are characterised by good adhesion and dispersion in Jesmonite composites, and by their high tensile strength and low elongation. PVA fibres will lead to improved flexural strength, and will help resist cracking and surface crazing in cast products. Typical addition rates are 1% - 2% of total mix weight.



code	weight	price
JESPV1	1kg	£38.06
JESPV10	10kg	£313.22

## MOULD RELEASE AGENT

### Soft Wax Mixture Paste

Ideal for sealing the pores on a mould. Used to release hard polyurethane foams and casting materials from GRP, wood and silicone. Covers 50 g per m<sup>2</sup>. Dries clear after use.

code	weight	price
JESRW	500g	£24.05





## SURFACE TREATMENTS

**Jesmonite Flexiguard**

Sprayed on as a fine mist, Flexiguard chemically bonds with the surface of the AC730 stone finishes [and other Jesmonite cement-based composites] using nanotechnology after which water just beads up and rolls off. We were impressed! Effectively permanent due to the chemical bond, it is UV-stable, prevents soiling and mould and fungal growth. It protects against frost, oxide corrosion by acid rainwater and salty coastal and marine conditions. Slightly cloudy but invisible when applied. Almost odourless.



code	weight	price
JESFS1	1kg	£42.60
JESFS5	5kg	£181.74

**Jesmonite Penetrating Sealer**

This is specifically used when the sealing effect must be invisible [i.e. not a coating] but where good water, oil or stain resistance is required. It is particularly suitable for the Flex Metal surfaces [page 132] providing excellent protection whilst not affecting the metallic surface. It is also compatible with AC730 and will offer high resistance to all effects of external weathering.



code	weight	price
JESPS1	1kg	£52.52
JESPS5	5kg	£213.26

**Jesmonite Acid Etch**

Used to expose the fine decorative aggregate in AC730. The acid removes the cement rich film from the surface of objects moulded in AC730 to produce a stone finish. When diluted with water it can also be used as a cleaner for removing marks from AC730. Please refer to the AC730 user guide for further technical information – downloadable at flints.co.uk.



code	weight	price
JESAE5	5kg	£28.94

**Polyvine Stone and Brick Protector**

Water based dead flat penetrating sealer for porous surfaces that leaves surfaces looking like there's no sealer on it! Great on stone and plaster, we've also found it to be a good sealer for Jesmonite AC730. Micro porous & water-repellent. Can be brushed, sprayed or rolled.

Specification: Coverage: 15 - 20 m<sup>2</sup> per litre (depends on porosity of surface) Drying Time: 15 min - 1 hour. For interior or exterior use



code	volume	price
POL2601	1L	£24.18
POL2604	4L	£86.84

**Jesmonite Acrylic Sealer**

This is a general purpose clear acrylic sealer for Jesmonite systems. It provides prolonged external surface durability while retaining the key attribute of flexibility. It can be diluted, and Jesmonite composite pigments [see previous page] can be added to create colour washes to add patina or to age casts. It has a predicted external maintenance schedule of 6 - 10 years depending on the severity of exposure. The matt version is compatible with AC100 & AC300 only, the new gloss version is compatible with all Jesmonite systems.



code	Finish	weight	price
JESICTN	Matt	1kg	£24.03
JESICTNG <b>NEW</b>	Gloss	1kg	£24.03

# SOLVENT-BASED GLASS FIBRE

## LAY UP RESINS

### Lay Up Resin - Resin A

A pre-accelerated low viscosity polyester resin with rapid hardening characteristics. It combines fast impregnation of reinforcements and fillers with a very short mould release time. Suitable for hand lay or spray applications. It is filled and has a matt finish. Also suitable for hand props and scenic work but it is not flame retardant. Add 2 ml of catalyst to 100 g of resin. Previously Crystic 471PALV. SPECIFICATION: UN 1866. Pot life at 20°C/12 min. Pot life at 25°C/8 min. Max pigment paste: 10%. Appearance: cloudy mauvish. Barcol hardness: 47. Water absorption: 24 hours at 23°C/18 mg. Tensile strength of resin: 68 MPa. Tensile modulus of resin: MPa 3700. Elongation at break: 2.5%. Specific gravity at 25°C: 1.22. Catalyst: UN 3105.



code	description	weight	price
PRO401	Lay Up Resin 471PALV	5kg	£44.10
PROCAT1	Catalyst for Polyester Resin	100g	£5.80
PROCAT5	Catalyst for Polyester Resin	500g	£13.85

### Firestop Flame Retardant Resin S 810 & VNature Gelcoat

A pre-accelerated low viscosity polyester resin recommended for the production of opaque flame retardant laminates. Michael Whiteley kindly tested this for us and was very happy - he found the slightly thicker than normal gelcoat combined with the slightly thinner resin make the combo particularly suitable for building larger pieces of scenery and mouldings. UN1866

SPECIFICATION Resin: UN1866 Gel time: 20-30 min. Pot life at 20°C/20-30 min. Barcol hardness: 25. Tensile strength: 26.96 MPa. Elongation at break: 2.67%. Specific gravity at 25°C: 1.58 g/ml. Catalyst: UN 3105 [max. 1 ml per 100 g of resin]. SPECIFICATION Gelcoat: UN1866 Gel time: 10-15 min. Pot life at 20°C/14-21 min. Max pigment paste: 10%. Barcol hardness: soft gelcoat. Tensile strength: 52 MPa. Elongation at break: 8.2%. Specific gravity at 25°C: 1.3 g/ml. Catalyst: UN 3105 [max. 2 ml per 100 g of resin].



code	description	weight	price
PROS810	Resin	22kg	£242.45
PROF5000	Gelcoat	22kg	£239.00

## FLINTS CLEAR CASTING RESIN

### Flints Clear Casting Resin

Clear casting resin for props, costume jewellery or paperweights. Cures water clear, ideal for encapsulating items. It's a pre accelerated, low exothermic, low viscosity, clear, unsaturated polyester resin. Add 1-2% of catalyst to resin weight (eg. 100g resin = 1-2 g of catalyst)

Colour before curing: Translucent, slightly blue, When cured: crystal clear, Tensile Strength: 69 Mpa, Flexural Strength: 90 Mpa



code	description	weight	price
PRO7001	Flints Clear Casting Resin	1kg	£18.35
PRO7005	Flints Clear Casting Resin	5kg	£61.75
PROCAT1	Catalyst for Polyester Resin	100g	£5.80
PROCAT5	Catalyst for Polyester Resin	500g	£13.85

## GELCOATS

### Gelcoat - Crystic 65PA

This brush-applied gelcoat has excellent weather- and water-resistance with low taint. Moulders choose it over competitively priced products because of its exceptional handling properties in production, good flexibility, good gloss and ease of repair. This gelcoat is also widely used in the marine industry. Add 2 ml of catalyst per 100 g of resin. Lloyds approved.

SPECIFICATION: UN 1866. Pot life at 20°C: 15 min. Pot life at 25°C: 9 min. Available to order in various colours. Adding pigment paste may effect the water- and weather-resistance. Appearance: cloudy mauvish. Barcol hardness: 42. Water absorption 24 hours at 23°C/18 mg. Tensile strength of resin: 75 MPa. Tensile modulus of resin: MPa 3,500. Elongation at break: 3%. Specific gravity at 25°C: 1.11. Catalyst: UN 3105.

code	weight	price
PRO403	5kg	£56.86
PRO412	25kg	£212.60

## CASTING RESIN

### Smooth Cast [Bright White]

Virtually bubble-free and ultra-low viscosity resin, ideal for capturing detail. When cured Smooth-Cast castings are bright white, tough and durable. They can be painted and resist moisture, mild solvents, moderate heat and dilute acids. Likewise, they can withstand being machined, primed and bonded to other surfaces. Comes in a two part kit to be mixed in a 1:1 volume ratio to activate. We stock two types of Smooth-Cast; Smooth-Cast 300 is fast setting whilst Smooth-Cast 305 is medium setting.

SPECIFICATION: Colour: White, Mix 1A:1B by volume or 100A : 90B by weight. Tensile strength: 3,000 psi, Mixed Viscosity: 80 cps, Specific Gravity: 105 g/cc, Specific Volume: 26.4 in3/lb, Heat Deflection Temp: 50°C, Shore D hardness: 70. Smooth Cast 300: 3 min pot life at 23°C, 7-10 min cure time at 23°C, Elongation at break: 5%, Flexural Strength: 4,510 psi, Compressive Strength: 4,000 psi, Shrinkage: 0.01 inch/inch. Smooth Cast 305: 7 min pot life at 23°C 30-40 mins cure time at 23°C, Elongation at break: 7.5%, Flexural Strength: 4,000 psi, Compressive Strength: 3,800 psi, Shrinkage: 0.0065 inch/inch.



code	description	cure time	weight	price
PRO47641	300 (fast)	7-10mins	0.86kg	£25.30
PRO47661	300 (fast)	7-10mins	6.98kg	£155.75
PRO47441	305 (medium)	30-40mins	0.86kg	£27.73
PRO47461	305 (medium)	30-40mins	6.98kg	£155.98

## REINFORCING RESIN FOR POLYSTYRENE

### Ares P800 Resin 25 kg

Designed specifically for adhesion to expanded polystyrene foam, we were really impressed with both its adhesion and finished coating effect. We tested it on our expanded polystyrene balls (page 114). Tests showed a good clear coat was achieved when applied with a reinforced surfacing tissue, and alone. The resin didn't melt the polystyrene at all and gave a really good clarity. Perfect for sealing and gluing larger scale projects, or where durability is key. Catalyst should be added at 1-2 % subject to conditions and requirements.

Formerly known as R999 but has the same formulation.

SPECIFICATION: UN 1866. Pot life at 20°C: 40-45 mins Pot life at 25°C: 30 mins Appearance: pinkish opaque. Water absorption: 0.63% in 72 hours at 25°C. Specific gravity at 25°C: 1.13 g/ml Catalyst: UN 3105.



code	weight	price
PROR99925	25kg	£248.00

## AMPRO EPOXY BIO RESIN

### Ampro Epoxy Bio Resin

Bio-Based Epoxy Resin to use for bonding materials, laminating as a heavy duty top coat, filling when mixed with micro balloons or glass bubbles, or as GRP (Glass reinforced plastic, aka fibreglass). This more sustainable marine grade resin had the same mechanical properties as the previous version we sold so we have swapped over. 40 - 60 % of this resin is bio based which makes it one of highest bio-based resins on the market. Easy 3:1 (resin:hardener) mix ratio by volume, with the option of a fast or slow hardener depending on your use.

Colour when cured: Translucent/amber, Curing Times for Fast Hardener: Pot life/Working time = 23 mins, Tack Free = 2hrs 40mins, Earliest sanding time: 16 hrs, Curing Times for Slow Hardener: Pot life/Working time = 43 mins, Tack Free = 4hrs 30mins, Earliest sanding time: 20 hrs. Please note that curing times vary depending on ambient temperatures, for optimal results use at 25 °C.



code	description	Type	weight	price
ADHF530060S	Ampro 4.2 kg Fast Resin/Hardener	Fast	1.3kg	£54.91
ADHF530033	Ampro Bio-Slow-1.3kg Resin/Hardener	Slow	1.3kg	£55.49

## FLINTS EPOXY RESIN

### Flints Epoxy Resin

Economical Epoxy Resin for general purpose bonding, laminating, filling and casting. With the introduction of the new Marine grade Bio Based Epoxy Resin we thought it would be useful to also introduce new a more general-purpose, budget friendly option. Simple mix ratio of 2 parts resin to 1 part hardener by weight.

Colour when cured: Translucent/slightly amber, Pot life/Working time: 10 mins, Full cure: 7 days

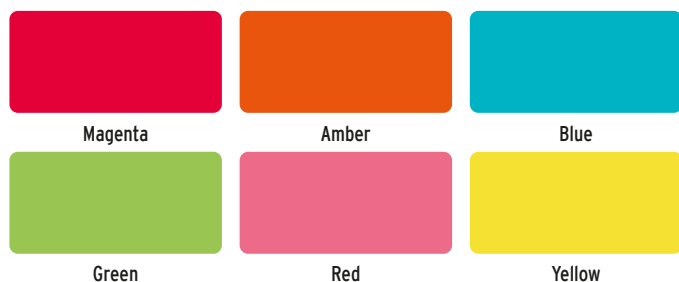


code	description	weight	price
PROEPOXRES15K	Flints Epoxy Resin Kit	1.5kg	£31.87
PROEPOXRES45K	Flints Epoxy Resin Kit	7.5kg	£112.88

## RESIN ADDITIVES

### Translucent Resin Pigment

For use with the Flints Clear Casting Resin, use these translucent pigments to add a tint of colour to your resin. The more pigment you add the greater the effect on the opacity, so these are best used sparingly, adding a little at a time. 1 or 2% of pigment of the total weight of the resin (ie. 1-2 g per 100 g) should be enough to give you a strong colour without noticeably reducing opacity. For use with polyester resin only.



code	Colour	weight	price
PRO20162	Magenta	500g	£21.06
PRO6796	Amber	500g	£19.10
PRO6798	Blue	500g	£15.36
PRO8618	Green	500g	£15.99
PRO6797	Red	500g	£17.14
PRO6794	Yellow	500g	£16.44

### Crystic Pigment Pastes

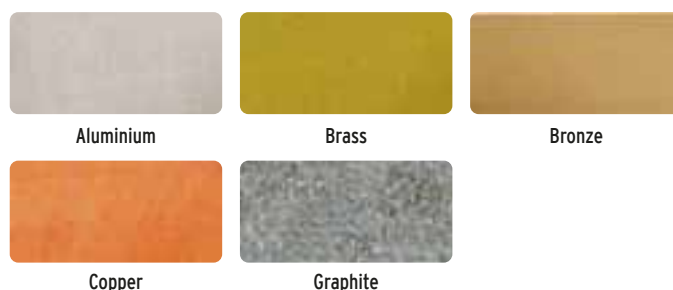
The above resins can be tinted using these pigments. Do not add more than the recommended amount [see the Technical Data of each product]. A huge range of colours are available to order, but these are also intermixable which is a big plus!



code	Colour	weight	price
PROPIG20	Golden Yellow	500g	£22.49
PROPIG22	Light Teak	500g	£15.71
PROPIG24	Post Office Red	500g	£20.58
PROPIG26	Black	500g	£12.18
PROPIG28	Cream	500g	£15.36
PROPIG21	Yacht Green	500g	£17.70
PROPIG23	Tangerine	500g	£27.44
PROPIG25	White	500g	£12.32
PROPIG27	Bright Blue	500g	£16.62
PROPIG29	Aircraft Grey	500g	£15.20

### Metallic Powders

For metallic-looking castings, pre mix resin with metallic powder before adding catalyst [adhere to mix ratio of catalyst to resin, rather than mix including metallic powder]. The dull casting will need buffing with wire wool and metal polish to bring out the realistic effect [check out the polisher on page 132]. An aged effect can be obtained by adding one part of graphite powder per ten parts of metallic powder. Flints also sell metallic "powders" for making paint but they are not suitable for this application.



code	Colour	max powder resin ratio	weight	price
PRO453	Aluminium	1:1	500g	£23.50
PRO452	Aluminium	1:1	5kg	£119.55
PRO455	Brass	5:1	500g	£33.37
PRO454	Brass	5:1	5kg	£255.60
PRO451	Bronze	7:1	500g	£33.93
PRO450	Bronze	7:1	5kg	£163.30
PRO457	Copper	3:1	500g	£35.50
PRO456	Copper	3:1	5kg	£267.55
PATGP0200	Graphite	see text	200g	£5.95
PATGP2400	Graphite	see text	2kg	£57.14



# SOLVENT-BASED GLASS FIBRE

## REINFORCEMENTS

### Chopped Strand Mat 450 g/m<sup>2</sup> [Type CTG]

This is the most popular weight of chopped strand mat [CSM] suitable for most laminating. Using a fin roller or paddle roller [page 143] will greatly aid effective wetting out, essential for strong long-lasting laminates. The mat is 965 mm wide and is available by the metre. Also available as a box containing a roll of approx 56 metres which weighs 33 kg. Not suitable for use with Jesmonite because the mat requires solvents to make it pliable. Also see Chopped Strands [page 134].



code	width	price	56 m+
PRO430	965mm	£3.55	£2.61

### Surfacing Tissues [ACM1]

The application of surfacing tissue will provide a smoother finish to laminating work.



code	width	per m	250 m+
PRO433	1m	£2.65	£2.13

### Woven Roving 600 g/m<sup>2</sup>

Woven roving is used to obtain a higher strength weight ratio than is possible with chopped strand mat [CSM]. Available by the metre or in a roll of approximately 60 metres. Weight of 60 m is 40 kg.



code	weight	width	per m	60 m+
PRO436	600g/m <sup>2</sup>	1m	£3.70	£3.00

### Glass Tape

Reinforces plywood joints when used with Ampro Epoxy Resin [see previous page].



code	length	width	per 50 m
PROME0020C	50m	50mm	£16.51

### Paper Rope

To stiffen large areas of glass reinforced fibre. Paper rope can also be used to act as formers for laminated ribs on the rear of the structure. 1" diameter though other sizes of paper rope are available [page 107].



code	diameter	per m
PRO123	25.5mm	£1.54
code	diameter	100 m coil
PRO123D	25.5mm	£117.25

## FILLER POWDERS

### Glass Bubbles

These hollow spheres serve to increase the volume and decrease the density of any resin system. They are used in adhesives and to make easily sanded filling and fairing compounds. In the theatre industry, they are often added to textures such as Idenden to reduce the weight. SPECIFICATION: Composition: 'C' Glass. Appearance: white. Particle size: 40 - 80 microns. Particle density: 200 g/litre approx. Bulk density: 100 - 150 g/litre approx.



code	weight	volume	price
FILA230001	0.3kg	3L	£17.34
FILA230003	5kg	50L	£188.82

### Fillite

Fillite is a glass hard, inert, hollow silicate sphere. Fillite is primarily used to reduce the weight of resins and moulding materials. The spherical nature of the material ensures the lowest quantity of binder is needed to wet out the material.

- ✓ Lightweight - reduces the weight of your material
- ✓ Spherical - free-flowing
- ✓ Inert

SPECIFICATION: Average particle density: 600 - 850 g/L. Average bulk density: 350 - 450 g/L. Packing factor: 60% - 65%. Appearance: Grey powder. Hardness: Mohs scale 5. Average wall thickness: 5% - 10%. Melting temperature: 1200° - 1350°C. Thermal conductivity: 0.11 Wm-1K-1. Loss on ignition: 2% maximum. Surface moisture: 0.3% maximum. Crush strength: 105 - 210 kg/cm<sup>2</sup> [1,500 - 3,000 psi].



code	weight	volume	price
PRO500SG	20kg	50L	£71.51

### SP Micro Fibres

These are very fine wood cellulose fibres commonly used to create structural adhesives for bonding both wood and GRP. Because any low viscosity resin system is readily absorbed into a porous surface such as wood, an unfilled adhesive may tend to give a "dry joint". With their absorbent properties, micro fibres can retain a significant quantity of adhesive within a joint and limit resin absorption into the surrounding surface, thus ensuring an adequate resin supply for adhesion. Where the strongest bond is required e.g. timber scarf joints, microfibrils should always be used in preference to hollow sphere types of filler. For bonding parallel to the grain with lower density, lower strength timbers, such as cedar or obeche, a micro-balloon mix is often adequate, and is of lower density.

#### Product Details

Composition: Milled bleached cellulose wood pulp  
Appearance: White 'fluffy' fibrous consistency  
Particle Size: 200 - 300 microns  
Particle Density: Particles absorb resin  
Bulk Density: 100 g/litre approx



code	weight	price
ADHA215003	500g	£9.95

## FLOW MODIFIER

### Flow Modifier - Colloidal Silica

When added to resin with other filler powders, the colloidal silica will act as a thickening agent to prevent sagging on vertical surfaces. A typical mix would be 445 ml of resin, 145 ml of glass bubbles and 11 ml of colloidal silica.



code	weight	volume	price
FILA220003	250g	5L	£15.42

## PVC

### Remeltable PVC Compound

This material is used in similar situations to silicone rubber providing a lower cost, but less durable option. Remeltable PVC can be poured over a master to form a flexible mould. Good tensile strength and flexibility will allow castings with deep undercuts to be removed from a one-piece mould, without damage. The material does not require a release agent and when the mould is worn, the product can be remelted [at 130 - 135°C] and used again – a fully recyclable product! We offer the product in two grades, Flexible [Beige] and Semi-Flexible [Blue]. Choose the Semi-Flexible for large moulds and the Flexible for more detail. The melting pot gives a thermostatically controlled temperature range of between 50°C and 200°C and will prevent scorching. Be aware that the product will not reach sufficient heat to melt in a water jacket double boiler. Jesmonite do not recommend using this in conjunction with their products, but instead to use a high grade silicone moulding compound.

code	description	Colour	weight	price
PRO1011482	Flexible	Beige	1kg	£15.00
PRO1011512	Semi-Flexible	Blue	1kg	£15.00
PRO1011505	Flexible	Beige	25kg	£265.00
PRO1011536	Semi-Flexible	Blue	25kg	£265.00
PRODPS25	Melting Pot		2.5L	£595.00



## FLINTS SILICONE & CURING AGENT KITS

### Flints Silicone & Curing Agent Kits

NEW

A general purpose, condensation cured silicone for mould making with great reproduction of fine details. It is extremely durable making moulds of all sorts to be used and reused again and again. For use with Jesmonite, resin (all kinds), plaster, wax, the list goes on and on. Perfect for making moulds where there are deep undercuts present. If you need to brush or slather on to vertical surfaces the addition of thixotrope will increase the viscosity so that the silicone doesn't run (Add 1-2% by weight of Thixotrope to total mix). Sold as kits with silicone and catalyst included or available separately if you require a variety of catalysts (Slow, Fast, Very Fast), please see below for cure times. The silicone itself is off white but it can also be tinted with silicone pigments. For casting body parts see new ZA22 - Skin Safe Silicone or Alginate.

Specification: Colour: Off white, Mix Ratio: 10 parts silicone to 1 part catalyst by weight, Medium hardness.

Fast Catalyst: Working Time/Pot Life: 30 - 45 mins, Curing Time (Max.): 6 hrs, After curing for 2 days, Hardness (Shore A): 23, Tensile Strength (MPa): 4.6, Elongation at break (%): 543.

Slow Catalyst: Working Time/Pot Life: 90 - 120 mins, Curing Time (Max.): 24 hrs, After curing for 2 days, Hardness (Shore A): 19, Tensile Strength (MPa): 4.6, Elongation at break (%): 622.

Very Fast Catalyst: Working Time/Pot Life: 8 - 10 mins, Curing Time (Max.): 2 hrs, After curing for 2 days, Hardness (Shore A): 25, Tensile Strength (MPa): 4.1, Elongation at break (%): 438.

code	Type	weight	price
PROSILIF1K	Fast Kit [silicone + curing agent]	1kg	£30.80
PROSILIF5K	Fast Kit [silicone + curing agent]	5kg	£107.17
PROSILIS1K	Slow Kit [silicone + curing agent]	1kg	£30.80
PROSILIS5K	Slow Kit [silicone + curing agent]	5kg	£107.17
PROSILIVF1K	Very Fast Kit [silicone + curing agent]	1kg	£30.80
PROSILIVF5K	Very Fast Kit [silicone + curing agent]	5kg	£107.17
PROSILICONE09	Silicone Only *No Curing Agent*	0.9kg	£26.35
PROSILICONE45	Silicone Only *No Curing Agent*	4.5kg	£90.55
PROFC100	Fast Curing Agent Only	100g	£4.45
PROFC500	Fast Curing Agent Only	500g	£16.62
PROSC100	Slow Curing Agent Only	100g	£4.45
PROSC500	Slow Curing Agent Only	500g	£16.62
PROSILITHIX01	Thixotrope	100g	£14.90
PROVFC100	Very Fast Curing Agent Only	100g	£4.45
PROVFC500	Very Fast Curing Agent Only	500g	£16.62



Great for casting with deep undercuts like the underside of a Stage Weight.

# MOULDMAKING

## ZA22 SKIN SAFE SILICONE

### ZA22 Skin Safe Silicone

NEW

A skin safe addition cure silicone that can be applied directly to the face, hands or any body parts really. Although Alginate is also great at for life casting, moulds made from alginate can only be used very few times before it begins to degrade. You can use silicone again and again. ZA22 has the consistency of soft butter for application on vertical surfaces without dripping off so no need for the addition of thixotrope. Cast into moulds made from ZA22 with a variety of casting materials: polyester, epoxy, polyurethane resins, and plaster, concrete or Jesmonite. Mix ratio of 1:1 by weight (base:catalyst) and for ease of mixing the base is pink and catalyst white, simply mix until the colours are fully blended. Apply directly to skin with no barrier necessary but of course be careful around hairs, I used a little moisturiser on my very hairy hand in testing and was not left bald.

SPECIFICATION: Colour when cured: Pink, Pot Life/Working Time: 6 mins, Cure Time: 15-20 mins, Hardness (Shore A): 22, Working viscosity (pre curing): >50000 cP



code	weight	price
PROZA222K	2kg	£72.50
PROZA226K	6kg	£172.35



Mix both parts until the colours are fully incorporated.



Spread on to body part using a tongue depressor.



Mould complete!

## SILICONE

### Pigments for Silicone

NEW

Concentrated pigments for addition & condensation cured silicone. Use for casting props or colour coding complex mould making.

When brushing on silicone to create a mould you can pigment each layer a different colour to ensure you have even coverage on every layer.

Colours are intermixable to create desired effect. Do not exceed 5% of pigment to total weight of silicone as this can effect curing.

code	Colour	weight	price
PROSILBK1	Black	100g	£17.50
PROSILBLU1	Blue	100g	£17.50
PROSILGR1	Green	100g	£17.50
PROSILRD1	Red	100g	£17.50
PROSILYW1	Yellow	100g	£17.50
PROSILDF1	Dark Flesh Tone	100g	£17.50
PROSILLF1	Light Flesh Tone	100g	£17.50
PROSILBK5	Black	500g	£42.25
PROSILBLU5	Blue	500g	£42.25
PROSILGR5	Green	500g	£42.25
PROSILRD5	Red	500g	£42.25
PROSILYW5	Yellow	500g	£42.25
PROSILDF5	Dark Flesh Tone	500g	£42.25
PROSILLF5	Light Flesh Tone	500g	£42.25





## LATEX & CASTING EMULSIONS

### Flints Slush Latex

A popular latex generally used for cast moulding where the latex is poured into a plaster mould. The latex is sensitised to give a speedy build up on the plaster. Thorough drying takes place over 24 hours. The latex should be detached with talc before removing from the mould. See website [www.flints.co.uk/downloads](http://www.flints.co.uk/downloads) for full data sheets.



code	volume	price	4+
PAT848	5L	£99.61	£89.68

### Flints Dipping Latex

Latex is a natural air drying liquid rubber used to make thin elastic self-releasing moulds. It is ideal for making small moulds without too much detail. It is the simplest of the mould materials as the object is simply dipped into the latex repeatedly until a thickness has built up. Allow to dry for 24 hours before removing using talc to de-tack. Great value.



code	description	volume	price
FHSDP05	Dipping Latex	5L	£41.14
FHSDP25	Dipping Latex	20L	£111.82
PAT844N	Latex Thickener	100g	£3.55

### HATO®Vit K50

The HATO®Vit K50 is a filling emulsion for sculptures, relief, props, candelabras, and masks. It's a great material for prop making because it's unbreakable, keeps its shape, can be nailed, and glued. Perfect for making terracotta style pots and vases that won't smash! Fresh mouldings will show sharp contours and require no reworking. Ready to use straight from the pot; there is no loss of material in preparation, but will shrink 5 - 10%, so make mouldings correspondingly oversized. Can be used as a mould but only cast into it with plaster of paris. Easily over-coated with standard scenic acrylic paints when dry, or the materia can be tinted with HATO®Tex Paint [available to order], max 5% addition.



code	weight	price
PAT105001	1kg	£15.90
PAT105005	5kg	£82.80

### Rubber Milk

A stabilised form of natural rubber; the resulting casts are highly flexible and naturally have a slightly yellowish milky colour. See also Liquid Latex page 121. Can be tinted by adding up to 5% of HATO®Tex Paint [available to order]. Only cast into plaster moulds that are thoroughly dry. Shrinkage: 5-10%. Rubber Milk is quite thin already and easy to pour but if it needs to be diluted, please use a 10% Ammonia Solution. Pour into the mould, and leave for about 15-20 minutes, until the desired wall thickness has been reached. Demould after 1/2-2 hours. Full cure after 3-12 hours depending on temperature. Higher temperatures can reduce the cure time, but temperatures should not exceed 45°C when in the mould, and 80°C once demoulded.



code	weight	price
PAT1062	1kg	£22.92

## CLAY

### Nylon Reinforced Air Drying Clay

Natural clay reinforced with nylon fibres to add strength and stability - No kiln needed! Simply sculpt your shapes and let it dry naturally. Dried clay can also be reconstituted by re-wetting. The clay is mined close to production site in Staffordshire & Shropshire.



NEW

code	Colour	weight	price
PROAHC001	Grey	1kg	£4.41
PROAHC045	Grey	4.5kg	£12.58
PROAHC125	Grey	12.5kg	£20.99

### Standard Grey Clay

Standard grey clay good for all round, general purpose jobs such as modelling, throwing, casting and romance. Cures to a pale buff colour with smooth texture. Fires at 1120° to 1280°C. Supplied in 20 kg plastic wrapped blocks.



code	weight	price
PROSGC25	20kg	£13.98

## PLASTER

### Fine Casting Plaster Plus

This is a very fine plaster intended for casting. Plaster moulds are normally only used once and are referred to as waste moulds. The addition of a little PVA will strengthen the mould. The original is generally modelled in clay. It must be treated with a release agent before use. To seal moulds prior to using resin-based systems see G4 on page 16. Available in a 2.5 kg tub or a 25 kg sack.



code	weight	price
PRO4622	2.5kg	£12.04
PRO4621	25kg	£18.64

### Prestia Classic Casting Plaster

A very consistent casting plaster, widely used for ornamental plaster moulding both for reverse moulds and castings. Excellent for sculpting, giving very fine detail. Available in a 5 kg tub or a 25 kg sack.



code	weight	price
PROPCP5	5kg	£11.67
PROPCP25	25kg	£24.61

### Prestia SH Alpha Blaster

A high quality hard casting plaster. With significantly less expansion than similar plasters, and a slower setting time, this plaster will set very hard. Popular for use with acrylic resins for casting. 25 kg bag.



code	weight	price
PROSHA25	25kg	£31.85

# MOULDMAKING

## Crystacal R Plaster

Very hard, brilliant white plaster very popular with artists & dentists alike.

Picks up detail extremely well and the plaster of choice for applications where surface hardness & durability are key.

Specification: Plaster to Water Mix Ratio (by weight): 100 : 35, Initial Setting Time: 15 mins, Expansion: 0.4%, Dry Compressive Strength: 55 Mpa, Wet Compressive Strength: 28 Mpa

code	weight	price
PROCRY25	25kg	£37.75



## Plaster of Paris

Very fine plaster which is quick setting, easy to prepare and easy to sand. Ideal for plastering, bedding or moulding. Thickness up to 150 mm depth. Working time for moulding 10 - 15 minutes. Available in a 4 kg sack.

code	weight	price
PROPP4	4kg	£10.19



## PLASTER CONTROL AGENTS

### Plaster Control Agents

Increase or decrease plaster setting times. You might want to increase working time if spreading plaster over a large area or decrease setting time if you want to clock off a little early.

For the accelerator, use sparingly, as a guide, mix 5g per litre of water to be mixed with plaster. This will approximately halve the setting time.

For the retarder, dissolve 100g in 1 litre of hot water and allow to cool, add 5 ml of this mixture per litre of water to be mixed with plaster. This will approximately double the setting time.

For both of these control agents the setting times will vary a lot depending on the plaster so it's important to test before adding to final mixes.

code	weight	price
PROPA1	1kg	£10.08
PROPRI	1kg	£10.65

NEW

## RELEASE AGENTS AND MOLD SEALS

### Smooth-On Universal Mold Release

Universal Mold Release Agent is formulated especially for mould-making and casting and works well with most liquid rubber and liquid plastic products. Will release mould rubbers such as polyurethanes and poly-sulfides as well as sealing wood, plaster, concrete and water or sulphur based clays. Easy to use spray can - shake well, and spray from a distance of 12".

code	description	weight	price
PRO70010	Spray Can	340g	£15.69



### Soft Wax Mixture Paste

Ideal for sealing the pores on a mould. Used to release hard polyurethane foams and casting materials from GRP, wood and silicone. Covers 50 g per m². Dries clear after use.

code	weight	price
JESRW	500g	£24.05



### Silicone Spray Release Agent - Formula 6

Multi-purpose medium duty release agent. Ideal for all thermoplastics and many kinds of rubber. Can be used with Jesmonite.

code	volume	price
PROF6	400ml	£15.84



### Smooth-On SuperSeal

A fast drying, economical sealing agent for porous surfaces such as wood, concrete or gypsum plasters. Effectively seals surfaces without compromising the detail. SuperSeal can easily be removed by rinsing with warm water.

code	weight	price
PRO84540A	360kg	£23.51



## SUPPORTS

### Mod Roc and Plaster Bandages

An impregnated bandage which is activated by immersion in water. Used largely for life casts. The bandaging sets within 5 minutes and is hard in 30 minutes. Available as bandage or cut in pieces known as Mod Roc. Also see Varaform [page 112].

code	description	length/weight	width	price
PRO4650	4 rolls	3m	50mm	£5.10
PRO4675	2 rolls	3m	80mm	£3.21
PRO460	Cut pieces	6.5kg		£45.16
PROMR275	1 roll	170g		£2.63



## MEASURING TOOLS

### Calibrated Measuring Beakers

A strong clear polypropylene graduated pot for accurate measuring of two-part mixtures. Ratios covered: 1:1 to 11:1. Also has accurate measurements from 100 - 1150 ml in 25 ml increments, and 3 - 40 US fl. oz in 1 US Fl. Oz. increments. Max. capacity 1400 ml



code	description	volume	price
PROCUP1400NK	Clear calibrated pot & lid	1400ml	£0.80

### Syringes

Useful for catalysts. Graduated in 1 ml sections.



code	volume	qty	price
PRO623	10ml	10 pack	£4.32
SAF300866	50ml	each	£1.50

### Catalyst Dispenser – The Swedtool Dosimeter

Slide the pipe until the hole lines up with the desired level then just squeeze the bottle to transfer the correct amount of catalyst into the measuring head. Fitted with a lid to prevent splashes.



code	volume	price
PRO622	750ml	£17.85

### Plastic Scoops

For handling loose powders. The large scoop is 360 x 150 mm with a pan of 235 x 90 mm deep. The small one is 250 x 105 mm with a pan of 150 x 60 mm deep.



code	description	scoop length	pan length	scoop height	pan depth	price
PRO624	Small	250mm	150mm	105mm	60mm	£2.81
PRO625	Large	360mm	235mm	150mm	90mm	£6.00

### Digital Scales

These portable scales can be battery or mains operated. We sell them in two sizes: up to 6 kg in 1 g increments [ideal for weighing pigments] and a bigger version which will weigh up to 45 kg in 20 g increments [ideal for weighing Jesmonite].



code	max. capacity	price
PRODS405	6kg	£129.95
PRODS100	45kg	£126.95

## LAMINATING

### Laminating Brushes

These Chinese brushes have unpainted wooden handles which are ideal for working with resin. For large quantities please ask for a tailored quotation.



code	brush width	price	12+
PBR159W	1/2"	£0.65	£0.58
PBR160W	1"	£0.75	£0.68
PBR161W	1 1/2"	£0.95	£0.85
PBR162W	2"	£1.25	£1.10
PBR163W	3"	£1.68	£1.50
PBR164W	4"	£2.25	£2.00
PBR165W	6"	£3.50	£3.15
PBRBBWSETK	1/2, 1, 2, 3 and 4"	£4.00	£4.00

### Swedtool Fin Roller

A convenient 70 x 30 mm diameter roller for laminating. The fin rollers are less likely to splash than paddle rollers.



code	roller width	roller diameter	price
PRO620	70mm	30mm	£17.50

### Swedtool Paddle Roller

A handy and economical roller which is 70 mm wide x 21 mm diameter.



code	roller width	roller diameter	price
PRO621	70mm	21mm	£6.68

### Olfa Deluxe Ergonomic Rotary Cutter

This rotary cutter is designed to be comfortable to use and safe. The blade of the rotary cutter is revealed by squeezing the handle and can be locked in an open or closed position. Ergonomic and ambidextrous, the increased grip means you can have more control and exert more pressure safely to your cutting. Made in Japan. Lifetime Guarantee.



code	description	qty	length	price
TOLRTY2DX	Olfa Rotary Cutter	1		£17.90
TOLRB451	Olfa Spare Blade	1	45mm	£6.75

### Mixing Blades

Essential for effective mixing of Jesmonite composites. The design of these high shear blades creates a vortex which does not introduce bubbles into the mix. See page 97 for more mixing blades and tools.



code	description	blade length	blade shank	mixes min	mixes max	price
JESLMB	Large	100mm	12mm	5kg	20kg	£38.85
JESLDMB	Small	65mm	8mm	1.5kg	5kg	£16.50
JESXSMB	Mini	35mm	6mm	0kg	1kg	£14.91



# ADHESIVE FINDER

## Find your perfect adhesive quickly!

Choose the materials and features you require here →  
.....and find the stuff here ↓

Find your perfect adhesive quickly!	Wood to wood indoors	Wood to wood water resistant	Marine grade	Laminates to wood	Canvas to wood [edge of flats]	Canvas to plywood larger areas	Canvas to walls - removable	Muslin to polystyrene scrimming	Polystyrene sheet to poly	Polystyrene to poly. gap filling	Flexible foams / PVC / inflatables	Wood to steel	Perspex to perspex	Glass, ceramics, stone	Costumes & Embellishments	Dance floor to plywood	Aluminium to aluminium or wood	Steel to steel	Structural adhesive	Poster to wall	Balsa to balsa or model/foam	Wallpaper to wall	Wallpaper - frequent removal	Small jobs multi use	Fire retardant grade	Mastic type needing gun	Spray applied	Super fast
General Purpose Adhesive				✓					✓			✓					✓								✓			
Polystyrene Contact Adhesive				✓					✓			✓					✓											
Evo-stik 528 and 528 TX	✓			✓	✓	✓																						
Evo-stik Impact	✓			✓								✓		✓								✓			✓			
Bostik 3206	✓		✓	✓	✓	✓					✓	✓					✓	✓										
Treadfast 108																	✓											
Flints Cyclorama Glue						✓	✓	✓	✓								✓				✓							
FlintsBond	✓					✓		✓													✓							
Sheppy M289	✓					✓		✓	✓												✓	✓						
Clam 2					✓	✓		✓	✓												✓							
Evobond	✓					✓		✓	✓												✓	✓						
Rosco Flexbond						✓		✓	✓		✓					✓					✓		✓					
Flints...dex / Copydex					✓	✓		✓	✓		✓					✓					✓							
Great Stuff Pro. Expand [pg 128]										✓		✓		✓											✓		✓	
Granular Size	✓				✓	✓		✓																				
Pearl Glue	✓				✓	✓		✓																				
Rabbit Skin Glue					✓	✓		✓																				
Scotch Glue	✓				✓																							
Collall Nature Glue									✗												✗	✗		✗				
Collall Glue Powder																					✗	✗		✗				
Evo-stik Resin W	✓	✓		✓																		✓						
Flints PVA Wood Glue	✓			✓																		✓						
Polyten	✓	✓		✓																		✓						✓
Polyproof	✓	✓	✓	✓					✓											✓								
Collano Semparoc	✓	✓	✓											✓						✓								
Ampro Epoxy	✓	✓	✓									✓		✓			✓	✓	✓						✓			
Araldite 2015 / Araldite Standard	✓	✓										✓		✓			✓	✓	✓							✓		
Hot Melt Glue Sticks	✓											✓		✓			✓	✓				✓		✓		✓		✓
Tuskbond XPRO	✓	✓		✓								✓													✓		✓	✓
3M Spraymount																					✓						✓	✓
3M Displaymount									✓												✓	✓					✓	✓
Ambersil NC500						✓					✓	✓									✓	✓		✓		✓	✓	✓
Idenden Multi Purpose						✓					✓	✓									✓	✓		✓		✓	✓	✓
UHU Power Spray																					✓						✓	✓
Polycell Wallpaper Adhesive																						✓						
Peel [plus above]																							✓					
Stixall, Stixall Black	✓	✓										✓	✓	✓			✓	✓			✓			✓		✓		
Gripfill	✓	✓		✓								✓		✓			✓	✓			✓			✓		✓		
Pinkgrip	✓	✓		✓								✓	✓	✓			✓	✓			✓			✓		✓		✓
Sabatack	✓	✓	✓									✓	✓	✓			✓	✓								✓		
Tremsil 600															✓	✓										✓		
Zap-a-Gap and Super Glues	✓										✓	✓	✓	✓			✓	✓			✓			✓				✓
JB Weld	✓											✓		✓			✓	✓						✓				
Bostik All Purpose / UHU	✓			✓							✓	✓	✓	✓			✓	✓			✓			✓				
Gorilla Glue	✓	✓	✓									✓		✓			✓	✓						✓			✓	
E 6000+								✓					✓	✓	✓				✓		✓	✓		✓		✓	✓	

✓ = recommended for this application ✓ = usable, but not recommended for this application ✗ = not recommended

## CONTACT ADHESIVES

When using contact adhesives please follow the health and safety instructions carefully. Pay particular attention to ensure that there are no naked flames and, as the fumes are heavy, beware of low level pilot lights. When using these glues on polystyrene ensure that the glue has completely dried before joining sheets as trapped solvent can cause damage even with recommended adhesives.

✓ = suitable on polystyrene ✗ = NOT suitable on polystyrene

### General Purpose Adhesive

[polystyrene ✓] This is a very popular brushgrade general purpose contact adhesive. It will work on painted or unpainted steel. This adhesive has a strong wet tack for fibrous materials and excellent adhesion. When working with polystyrene only use it as a contact adhesive allowing each side to thoroughly dry before bringing the surfaces together. It rapidly dries in 15 minutes and when dry conforms with BS 476 Part 6 and Part 7 Class 1 fire rating suitable for stage use behind the iron. Toluene-free. UN 1133. Covers 4 m<sup>2</sup> per litre.



code	volume	price	5+
AD1088	5L	£51.22	£46.10

### Polystyrene Contact Adhesive

[polystyrene ✓] Previously called Tretobond 375, this is a synthetic rubber-resin contact adhesive based in a blend of solvents. Used for the bonding of expanded polystyrene to itself, and to other smooth surfaces. Both surfaces require a thin uniform coat; the adhesive spreads easily. The surfaces must be completely dry [otherwise the trapped solvents can have a deleterious effect on polystyrene] before they are brought together preferably under pressure. Health and Safety information should be strictly followed. Do not mix the cleaner into the glue.



code	description	volume	price	5+
ADH063	Polystyrene Contact Adhesive	5L	£66.76	£60.08
ADH068	AW 421 Industrial Cleaner	5L	£29.95	

### Evo-stik 528

[polystyrene ✗] Previously called Tretobond 375, this is a synthetic rubber-resin contact adhesive based in a blend of solvents. Used for the bonding of expanded polystyrene to itself, and to other smooth surfaces. Both surfaces require a thin uniform coat; the adhesive spreads easily. The surfaces must be completely dry [otherwise the trapped solvents can have a deleterious effect on polystyrene] before they are brought together preferably under pressure. Health and Safety information should be strictly followed. Do not mix the cleaner into the glue.

See also Bostik 3206 Adhesive on page 149.



code	description	volume	price
ADH081	Evo-stik 528	1L	£25.92
ADH082	Evo-stik 528	5L	£99.98
ADH083	Evo-stik 191 Cleaner	5L	£69.28

### Evo-stik TX 528

[polystyrene ✗] Just like the Evo-stick 528, a synthetic rubber resin contact adhesive but with a thixotropic agent which makes it much easier to apply. This jelly-like adhesive spreads like soft butter rather than hot gruyère. Ideal for use on large and vertical surfaces as well as intricate work. It is easier to control and less likely to stray onto clean areas. Particularly suitable for bonding decorative laminate sheets and rigid plastic sheets of PVC or ABS. Adhesive: UN 1133. Cleaner: UN 1993.



code	description	volume	price
ADH079	Evo-stik TX 528	1L	£29.02
ADH0792	Evo-stik TX 528	5L	£106.05
ADH083	Evo-stik 191 Cleaner	5L	£69.28

### Evo-stik Impact

[polystyrene ✗] Similar to the 528, this contact adhesive bonds decorative laminates, wood, chipboard, hardboard, rigid PVC, ABS plastics, leather, cork, stone, china and earthenware. Sold in small sizes for convenient storage in the touring prop skip.



code	description	weight	price	12+
ADH0862	Small tube	30g	£4.48	
ADH0861	Large tube	65g	£8.25	
ADH086	Small pot	250ml	£9.95	
ADH087	Large pot	500ml	£17.95	£15.55

## WATER BASED CONTACT ADHESIVES

### Treadfast SF 108

A pressure sensitive adhesive ideal for vinyl dance floor or car carpet. It is solvent-free, non-flammable and has low toxicity. Treadfast 108 gives a strong permanent bond. Use a 1.5 mm x 5 mm notched trowel to apply and immediately roll with a shorthaired paint roller dampened with the adhesive. Allow to dry [goes clear] then position and roll with 68 kg roller. Covers 6 - 8 m<sup>2</sup> per L.

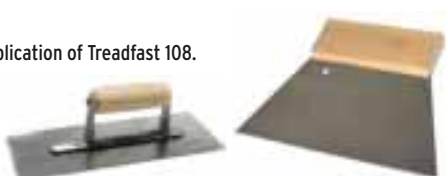


code	volume	price
ADH1085	5L	£64.84
ADH10815	15L	£161.40

## ADHESIVE TROWELS

### Adhesive Trowels

Handy for rapid and even application of Treadfast 108.



code	description	notch depth	notch gap	price
ADHT850	Small	1.5mm	1.66mm	£5.68
ADHTAS007	Large	1.5mm	5mm	£20.00

## CLOTH ADHESIVES

### Copydex Adhesive

Natural rubber latex solvent-free non-flammable adhesive used widely for bonding canvas, serge, velour as well as paper, card, cork, plastic, etc... When using with serge or velour the adhesive will show through if too much pressure is applied. It can be used as a contact or wet bond glue. Want it in a non-tidgy pot? Look no further than Flints...dex below.



code	volume	price
ADH092	125ml	£6.55
ADH097	500ml	£18.40

### Flints...dex

A quick grab latex adhesive for use on paper, card, wood, plastic, metal, cork, fabric, carpet, leather, canvas and many more materials. If making cut cloths be sure to dust any excess glue with French Chalk [page 30] before rolling up to prevent accidental dry contact gluing.

- ✓ Safe and easy to use
- ✓ Solvent-free
- ✓ Economically priced
- ✓ Water-based
- ✓ Free flowing – apply by brush or spreader
- ✓ Can be used to coat the back of floor cloths for a non-slip finish



code	volume	price	10+
ADH089	5L	£61.95	£55.75

### Clam 2 Brummer Latex Adhesive

A rubber latex solvent-free non-flammable adhesive which provides an exceptionally strong bond with a good open time for working on large areas. Thixotropic, it can be applied by brush or roller and is generally used for fixing canvas to open framed flats – see below. Clam 2 can also be used for bonding leather, cork, card, etc.

- ✓ Tenacious strength



code	volume	price
ADH095N	5L	£59.98

### Canvassing Open Frame Flats with Clam 2

Firstly, staple your scenic canvas 6 mm in from the inside edge of the frame along the long edge, flap back the canvas revealing the frame, brush on the Clam, fold back the canvas and rub with a piece of timber with the arris removed to force the glue into the material. Once the long edge has set [just a few minutes] staple the canvas around the rest of the frame [ensuring it is kept square] and repeat using the same technique. The Clam 2 is strong enough to stop the canvas puckering up behind the staples. Once the whole flat is glued down, take a Stanley knife with a sharp blade and trim off the excess canvas about 4 mm in from the flat's outer edge using your thumb as a guide. Trim a little bit off the corners at 45° and that's it. Leave overnight before priming.

### Flints Cyclorama Glue

This best-selling environmentally friendly glue is water-based and safe to use. We highly recommend it for sticking large canvas murals and cycloramas but it has many other uses including bonding vinyl dance floor to plywood or hardboard. Many of our clients use it to consolidate texturing compounds such as rubber crumbs. It makes a great polystyrene adhesive too! It can be used as a dry bond, wet bond or contact adhesive. Its unique advantages when used as a dry bond are:



- ✓ **No bleed through:** The glue will not damage the artwork. As the glue is only applied to the wall and the cloth is positioned when the glue is dry it cannot bleed through.
- ✓ **Repositionable:** If you get a wrinkle in your cloth or it goes out of alignment just gently peel back and try again.
- ✓ **Removable:** It is not permanent. You can actually remove the artwork from the wall when you have finished and no glue sticks to the canvas. Just roll the canvas up and transport to the next venue. It saves having to slit cloths down scenery joins after the first venue of a tour and allows expensive scenic artwork to travel separately from its heavy backings.
- ✓ **Paint off site:** Murals can be painted in the artist's studio rather than having to close down public areas of museums etc. while the painting is taking place.
- ✓ **Water-based:** It is water-based and is safe to use in areas where other contact adhesives could not be risked. The virtual lack of odour makes it a good choice when venues need to be re-opened quickly, reducing down time.
- ✓ **Multi-Purpose:** The glue can also be used as a wet lay or double bond for more permanent applications. It is suitable for bonding vinyl and rubber as well as natural cloths.
- ✓ **Easy and clean to use:** The adhesive comes with simple instructions and your tools just clean in water. Application is best using a notched trowel with 2 mm notches every 5 mm and then rolling with a pre-wetted short pile roller to provide a completely smooth surface. Covers approximately 4.5 – 5 m<sup>2</sup> per litre. Also in 15 L pails.



### The Three Methods

**Dry Bond:** Apply the adhesive to the wall and allow to dry. Gently position the cloth on the wall, adjust as necessary, then press down firmly. The cloth can be removed at a later date by peeling off.

**The Double Bond:** Flints Cyclorama Adhesive performs well as a water-based contact adhesive. Apply adhesive to both the wall and the cloth. Allow to dry. Press the cloth onto the wall for a permanent bond. This method will provide a strong bond for many surfaces including dance floors.

**Wet Bond:** Use as a conventional glue. Apply the cloth to the wet adhesive and allow to dry for a permanent bond. Use it to consolidate texturing compounds such as foam crumbs.

code	description	volume	price
ADH130		5L	£59.95
ADH131		15L	£145.65
ADHTAS007	Adhesive Spreader		£20.00
ADHTAS007B1	Spare Blade		£5.23



## FlintsBond

A waterborne PVA emulsion which is easy to spread. Suitable for use as a primer or for gluing cloths such as light canvas, calico or muslin to flats or for scrimming polystyrene. It can also be used as a concrete dust sealer by diluting 50% with water and applying with airless spray, brush or roller. It dries clear. Covers 3 - 5 m<sup>2</sup> per litre.



code	weight	price
ADH141N	5kg	£29.00
ADH142N	25kg	£125.00

## Sheppy PVA M289

A replacement for the popular M155 - this is a medium viscosity compounded emulsion glue. It has good running characteristics and dries to a strong flexible film. Excellent for gluing large areas of canvas and very popular with the big workshops. Also suitable for conservation work as the dried adhesive film will delaminate in the presence of water.

✓ Easy spreading for large areas



code	weight	price	10+
ADHM289	12.5kg	£89.75	£80.65

## Evo-bond

A universal adhesive, sealer and primer. Improves adhesion when used as a primer and will effectively bond many light sheet materials and cloths. Excellent value.



code	volume	price
ADH025	5L	£34.45

## Rosco Flexbond Adhesive

Clear flexible scenic glue which bonds many porous and non-porous scenic materials. Dries to a clear hard but pliable coating that does not remain "tacky" as other flexible coatings do. The adhesive bond does not crack and break when flexed. Recommended for bonding textures such as micafil and rubber granules. This adhesive also works well on polystyrene. Flexbond is water-based and safe to use.

✓ Clear and very flexible



code	volume	price
ROS60753	3.79L	£77.75
ROS60750019	18.95L	£356.25

## Canvassing with Hot Size

Size is best used on open frame flats as it is too difficult to maintain a hot fluid glue on ply clad flats [use Sheppy M155 for these flats]. For open frame flats, staple your scenic canvas 6 mm in from the inside edge of the frame along the long edge, flap back the canvas revealing the frame, brush on the hot size to the timber with a glue brush. While the glue is still warm, fold the canvas down and swab through with a warm damp cloth until a soap appears on the surface of the canvas. Ideally, this is done with two people, one gluing and the other swabbing. Keeps you lovely and warm, although you won't smell great. Repeat on the other three sides once the long edge has set up. Trim 4 mm in with a sharp Stanley knife.

## Granular Size

The most popular traditional glue for sticking canvas to timber flats and also used in the preparation of traditional primers and scenic paints [page 17]. To prepare size as a glue, mix 1 part of size with 1.5 parts of water whilst agitating. Leave to soak for one hour. Then dissolve by warming in a double bucket [water jacket] diluting further to a working consistency. Do not exceed 55°C. For glue brushes see page 83.



code	weight	per kg
PAT852	1kg	£12.50

## Pearl Glue

Like granular size but supplied in a pearl form. Traditionally used for sticking canvas to flat frames. Add 1 part of glue to 1.5 parts of water whilst agitating. Leave to soak for one hour and then dissolve by warming in a double bucket. It can be diluted further with water. Do not exceed 55°C. Use while warm.



code	weight	price	25+
ADH096	1kg	£20.75	£18.68

## Rabbit Skin Glue

The preferred glue of non-vegetarian fine artists for sizing canvas and making gesso. Keeps the little sods off your allotment too.

It's rubbish, don't buy it!



code	weight	price
ADH098500	500g	£22.80

## WOODWORKING ADHESIVES

### Flints PVA Wood Glue 5 kg

Our own label replacement for Evo-Stik's popular Resin 168. We hope this will become the go-to PVA for scenic workshops for many years. It is a quality, cost-effective PVA for the frequent user with strong adhesion just 20 minutes after application. Edd Smith, the Workshop Manager at Scottish Opera, fed back "we will be moving to the new Flints product straight away". It is suitable for bonding wood to wood and Formica to wood. It is not designed to be used in a wet environment. We supply it in 5 L containers and also in handy 25 L plastic drums with a tap for easy dispensing. Covers approximately 7.5 m<sup>2</sup> per litre.



code	weight	price
ADH305	5kg	£38.85
ADH325K	25kg	£145.00

### Evo-stik Resin W

A one-part synthetic resin emulsion adhesive for bonding hard and soft woods. Widely used for framework assembly, bonds wood veneers and laminated plastics to wood and chipboard. Complies with BS 4071:1966.



code	volume	price
ADH0841	250ml	£6.75
ADH0842	500ml	£8.98
ADH084	1L	£16.95

## Scotch Glue

A high quality jelly bone glue, manufactured from selected raw materials. It has a breaking strain far in excess of BS 745. It is recommended for antique restoration, chair frames, veneering, and any trade where a first class, long-lasting joint is necessary. Preservatives in this formulation keep the glue free from mould and bacteria for a long time in the glue pot. Its slower setting characteristics enable the glue to penetrate hard woods and provides a longer open time for intricate assembly work and veneering operations. To use: Warm gently until it reaches the consistency of paint, never so hot that it shows steam.



code	weight	price
ADH0071	1kg	£13.85

## Polyten

Extra water resistant wood adhesive, with a new ten minute fast grab formulation that can be handled within 30 minutes. Suitable for all woods, interior and exterior use. It is not suitable for continuous immersion in water. It dries clear and can be applied by brush, roller or straight from the bottle.



code	volume	price
ADHAPT1	1L	£11.61
ADHAPT5	5L	£34.12

## Polyproof

A completely water resistant resorcinol glue suitable for boatbuilding with continuous immersion in water [even boiling water!]. Used for the construction of laminated roof beams and bridge arches. Glues polystyrene, Formica and difficult timbers like teak. Superior to epoxy in terms of proven longevity, ideal for mast making. Consists of a liquid resin with a powder hardener.

SPECIFICATION: Flame resistant to Class 0. Approved by NTI Norway, Otto Graf Institut [FMPA] Germany, SKH/KOMO [DHBC No 32389] Holland for the production of load bearing timbers. Fulfils the requirements of EN 301 [for glue types 1 and 11, service classes 1,2,3], EN391, EN392 and DIN 68141.



code	weight	price
ADHAPP670	670g	£37.91

## Collano Semparoc

One-component PUR adhesives with high bond strengths. Suitable for waterproof [EN 12765] and weather resistant bonding of all timber materials, stone, cement-based boards, cork etc. They are suitable for assembly work and for use with hardwoods, softwoods and non-flammable building boards. This glue effectively replaces Balcoton and has the advantage that it tends to foam up less. Semparoc 60 gives approximately 1 hour working time.

SPECIFICATION: Viscosity at 20°C: > 8,500 mPa [4/20], density 1.25 g/ml. Solids content: 100%. Waterproof resistance: C4 in accordance with EN 12765. Flame resistance: EN 13501 to F120 [with corresponding materials and construction]. Heat resistance: to +120°C. Shelf life: 9 months. Spread rate: 100 - 300 g/m².



code	weight	working time	price
PATCS60	800g	60 mins	£27.45

## PLANT BASED ADHESIVES

### Collall Glue Powder

Whenever we've visited a workshop, or spoke to any set builders, scenics or prop makers, to talk about what more sustainable products we could offer - there was a common plea for a strong, plastic-free 'Eco Glue'. We thought surely there must be an easy alternative by now that could do the job but this proved quite the challenge. Commercial space travel, AI taking over people's jobs, driverless cars yet it seems that a bio-based PVA is a step too far. We didn't want to give up however, so we can now offer a 40-60% bio-based epoxy resin for heavy duty bonding and this starch based glue for light applications for bonding lightweight materials - like Dekozell, textiles, paper & cardboard. In testing, we've also made paint using this glue powder mixed with dry pigments to make a completely plastic free (but temporary) paint that can be mixed up as needed.

Collall Glue Powder is made from plant based Carboxymethylcellulose which is derived from plants and often used as a food additive or cosmetics. Incidentally, it's also the main ingredient in wallpaper paste - except wallpaper paste contains lots of preservative nasties. To use mix 1 part powder to 4 parts water (or 16 g of powder per litre of water). Stir well until powder is fully dissolved and let it sit for a few minutes to thicken. Clean up with water. To increase durability you can mix in PVA to increase durability. As there are no preservatives in this glue, it has a limited shelf life in its liquid state.



NEW



code	weight	price
ADHCOLGP1	1kg	£29.50

### Collall Nature Glue

This starch-based glue is made from potato dextrin dissolved in water. Ready to use straight out of the bottle, this glue is much more sticky than the glue powder with more of an initial grab. For glueing lightweight materials, paper, cardboard, lightweight textiles or.....glitter? Used in tandem with bio glitter you can create a glittering surface without the use of any plastic. Please note that both starch glues are not water resistant at all and will dissolve in contact with water. This can be spun to be a benefit however as anything stuck with these glues and be removed easily by soaking in water, making reusing the substrate far easier.



NEW



code	volume	price
ADHCOLNG1	1L	£12.90
ADHCOLNG5	5L	£59.00

## STRUCTURAL ADHESIVES

### Araldite 2015 Structural Adhesive

With the legendary strength of epoxy. Excellent bonding of aluminium, mild steel, stainless steel, copper, zinc and galvanised steel. Good bonding of rubber, glass, ceramics; and moderate bonding of polycarbonate, PVC, ABS and polystyrene. Perfect for use with Aerolam lightweight honeycomb panels. Dispensed with handgun via a self-mixing nozzle.



code	description	volume	price
ADH20151	Araldite 2015 Adhesive	200ml	£64.07
ADHVBM200	Skeleton Gun		£43.18

## GLUE STICKS

### All Purpose Glue Sticks

These quality glue sticks represent very good value.

SPECIFICATION: Ø: 11.75 mm. Length: 300 mm. Colour: None. Opacity: Transparent. Melt Temp: 86°C.



code	weight	price
ADH220	5kg	£52.00

### Rapid Brand Glue Sticks

For polystyrene, flowers and delicate materials. SPECIFICATION: Ø: 12 mm. Length: 190 mm. Colour: None. Opacity: Transparent. Melt Temp: 200°C.



code	weight	price
ADH40302799	1kg	£26.00

## Low Temperature Glue Sticks

Suitable for bonding materials that may be affected by high temperatures.

SPECIFICATION: Ø: 12 mm. Length: 190 mm. Colour: None. Opacity: Transparent. Melt Temp: 130-150 °C.

code	weight	price
ADH221	1kg	£28.20

## Black Glue Sticks

High quality coloured hot melt adhesive. For bonding a variety of materials.

SPECIFICATION: Ø: 12 mm. Length: 200 mm. Colour: Black. Opacity: Opaque. Melt Temp: 195 °C

code	qty	price
ADHBGS8	8 sticks	£8.50

Other coloured and glittered glue sticks can also be ordered in [subject to minimum quantities]. Please call and ask for prices.

## GLUE GUNS

### Steinel 5000 Cordless Glue Gun

This is a cordless glue gun for real versatility yet the cord can also be plugged directly to the gun for continuous output.

SPECIFICATION: Glue Output: 22 g per minute. Heat time: 3-5 mins. Weight: 330 g. Operating Temperature: 210 -220°C.

Stick Ø: 11 mm. Power: Mid-Operation: 500 W; Standby: 20 W

code	price
POW332716	£65.74



### Steinel Glue Gun Spare Nozzle 2.8 mm

code	price
POW075965	£7.77



### Bosch PKP18E

A good quality, very popular general purpose gun. Ideal for prop shops and display work.

SPECIFICATION: Glue output: 20 g per minute. Heat time: 7 mins. Weight: 350 g. Operating temperature: 200°C. Stick Ø: 11 mm. Power:

Mid-Operation: 200 W; Standby: 16 W.

code	price
POW090	£26.75



### Rapid Cordless Glue Gun BGX500

Rapid Cordless Glue Gun BGX500, the Rolls Royce of Glue Guns now compatible with standard 18 V Bosch batteries. This new model has a flow adjuster dial for variable glue speeds for a range of applications. Fits all standard glue sticks. The LED battery indicator lets you know when it needs a recharge. Glue gun comes in a case with charger, glue sticks and battery. Spare battery sold separately.

SPECIFICATION: Battery: Bosch 18 V 2.5 Ah. Heating time: 3 min. Glue output: 900 g/h. Stick Ø 12 mm, 2 hrs 30 mins operating time on full 2.5 Ah battery.

code	price
POWBGX500	£81.65



## Rapid Professional Glue Gun EG340

A high output glue gun that will reach working temperature very quickly and provides a choice of constant working temperatures. Features include an integrated thermostat, replaceable nozzle and long 2.5 m cord.

SPECIFICATION: Glue Output: 23.3 g per minute. Heat time: 2 mins. Weight: 0.93 kg. Adjustable temperature: 120 °C- 220 °C. Stick Ø: 12 mm. Exchangeable Nozzle Ø: 3 mm. Power: 220 W



Detail of the wide-spread nozzle



code	description	price
POWEG340	EG340 Glue Gun	£160.00
POW5000200	Extended Nozzle for EG340	£39.93
POW5000201	Wide Spread Nozzle for EG340	£39.93

## ADHESIVES FOR PVC

### Bostik 3206

A polyurethane-based contact adhesive specifically formulated for bonding both plasticised and unplasticised PVC to a wide range of substrates.

Typically used to make inflatables. This adhesive has less initial grab than conventional contact adhesives and requires a little more pressure, however the ultimate bond is very powerful.



code	volume	price
ADH32065	5L	£136.35

## WALLPAPER ADHESIVES

### Wallpaper Paste

Wallpaper paste! Mix briskly for 20 seconds with cold water, leave for 90 seconds, stir thoroughly then it's ready to use. 1 box hangs up to 30 rolls of wallpaper.

In case you weren't aware, wallpaper paste is actually a starch based glue so actually quite a sustainable choice....

code	price
ADHSLVDECBOX	£11.15



### Peel

A revolutionary product which allows wall coverings to be removed from a wall without soaking or scraping.

Coat the walls with Peel before you hang your paper and when you redecorate the old paper pulls off in complete lengths. Ideal for TV, theatrical and display applications where frequent decoration is necessary. Also see also Peelable Paint [page 297] and Mask It [page 296].



code	volume	price
ADH112	5L	£76.65



## SPRAY APPLIED ADHESIVES

### TuskBond XPRO

Rising prices are affecting us all and the same is true within the realm of contact adhesives. So we have made a decision to drop the popular TensorGrip L17 Adhesive and replace it with TuskBond XPRO. A brand new product, TuskBond XPRO uses the latest solvent technology to make an adhesive that rivals TensorGrip in terms of performance but is lower toxicity and non-chlorinated, a win-win. For use with Spray Gun and Hose. Also available in 500 ml aerosol.

- ✓ Great for covering large areas.
- ✓ Great for permanent bonds with high initial bond.
- ✓ Fast Drying
- ✓ Web Spray Pattern

Suitable for: ✓ Wood ✓ Metals ✓ Rubber ✓ Fabric ✓ Cardboard ✓ Polythene  
✓ Concrete ✓ Laminates ✓ Most Plastics

✗ Not for use with Vinyls containing large amounts of plasticiser as it can migrate over time.

Specification Coverage: 100 m<sup>2</sup> per tank Meets specification of BS 476: Part 7: 1997 Class 1 Fire Rating SAFT Heat Tested 100°C

code	description	volume	price
ADHTUSKT	Adhesive	22L	£169.00
ADHTUSKG	Gun		£65.35
ADHTUSKH	Hose	4m	£73.85



## AEROSOL ADHESIVES

### TuskBond XPRO Aerosol

Aerosol version of the TuskBond Pro listed in the previous column. Replacement for the popular TensorGrip L-17. More convenient size, all the same features.

code	volume	price
ADHTUSKA	500ml	£7.75



### 3M Spray Mount

Provides an instant repositionable adhesive for most surfaces. The controlled spray pattern reduces adhesive mist. Ideally suited for mounting light materials where the fine texture of the adhesive is unlikely to cause disturbance to the face surface. For heavier materials try Display Mount. UN 1950

code	volume	price	12+
ADHI20	400ml	£17.35	£16.15



### 3M Display Mount

The ideal choice for mounting exhibition lettering in foam, card, plastic or fabric. Can be used on polystyrene if applied thinly to prevent any solvent entrapment. UN 1950.

code	volume	price	12+
ADHI21	400ml	£17.35	£15.60



### Ambersil NC500

Suitable for paper, rubber, plastics, fabrics, foam, wood, metals, hessian, cork, felt, upholstery, carpets and flooring. A slightly coarser spray pattern than the 3M sprays but great value for a large 500 ml can. UN 1950

code	volume	price	12+
ADHI39	500ml	£10.38	£9.35



### Bostik Sprayable Adhesive

[polystyrene ✗] Replacement for the popular Idenden Spray Adhesive. We've tested it and can't tell the difference! A seriously economical spray adhesive that is perfect for bonding polyurethane foam, felt, cork and most plastics to wood and steel. There is a variable spray nozzle enabling large or small areas to be coated without overspray. Glue wastage is eliminated and it is a quick, clean and efficient means of bonding. Contains no Methylene Chloride. UN 1950

code	volume	price	12+
ADHI40N	500ml	£9.81	£8.83



### UHU Power Spray

A basic spray adhesive similar to Display Mount, with a very fine spray pattern, and we found there was no bleed through when testing on paper and card. For UHU & UHU Gel, see page 152.



## MASTIC ADHESIVES

### Sabatack 750 XL

This is our replacement product for Sikaflex 291. It is an MS Polymer that adheres superbly to metals and plastics. Its principle use would be to make gap filling high tensile bonds of fittings to ships and trucks etc. It can be used anywhere where dissimilar materials need bonding, with the mastic also forming a waterproof seal all in one process. May be used for bonding teak decking down to substrates.

- ✓ Fully UV stable
  - ✓ Can be easily overpainted
  - ✓ Long shelf life
  - ✓ Contains no solvents or isocyanates
  - ✗ Rather slow drying in cold weather
- SPECIFICATION: Hardness: shore A 55. Skin time: 15 minutes. Open time: 30 minutes. Viscosity: medium. Green strength: low. Cure rate: 3mm/24 hr. Tensile strength: 2.6N/mm<sup>2</sup>. Shear strength: 1.7N/mm<sup>2</sup>. Elongation at break: 330%. Temperature resistance: -40°C to +120°C. Shelf life: 18 months.



code	Colour	volume	price
SAB750XL	Black	290ml	£10.34

## Stixall – Extreme Power

Bonds and Seals VIRTUALLY EVERYTHING! Stixall, based upon new hybrid PMS polymer technology, is the ultimate combined building adhesive and sealant, with the power to bond and seal virtually everything to anything. Stixall offers almost limitless benefits as a permanently flexible adhesive and sealant, removing the application barriers associated with conventional products.



- ✓ Stops mould growth
- ✓ Clear version is crystal clear
- ✓ Solvent-free, no odour
- ✓ Overpaintable
- ✓ High bond strength
- ✓ Exterior or interior use
- ✓ Resistant to chemicals
- ✓ Totally waterproof
- ✓ Resistant to temperature extremes
- ✓ Incredible initial grab, no slip, gap filling
- ✓ Can be applied to wet surfaces
- ✓ Sticks glass, granite, brick, ceramics, fibreglass, mirrors, all hard plastics, timber, roof tiles, marble, stone, all metals and much more!
- ✓ 40-Year Lifetime Guarantee!



code	Colour	volume	price
ADHSTXC	Clear	300ml	£5.75
ADHSTXCB	Black	300ml	£5.50

## Gripfill

[polystyrene X] A market leading high strength gap filling mastic adhesive suitable for bonding wood, laminated plastic, metal, stone, ceramics, GRP and aluminium. One cartridge will provide a 6 mm bead approximately 10.25 m long.



code	volume	price	12+
ADH077G	350ml	£3.48	£3.13

## Pinkgrip

Richard Black just insisted that we stock this product which has an instant strong grip with no drooping. Battens can just be stuck to a wall where they will remain without additional fixings even while the glue sets. He raves about its qualities as if he owns shares. Richard claims to have built entire sets just using Pinkgrip, let's just hope he doesn't get into aeronautics. The Solvent-free version is brilliant for using with acrylic mirror.



code	description	volume	price	12+
ADHPG	Standard	350ml	£3.35	£3.00
ADHPGSF	Solvent-Free	350ml	£3.40	£3.05

## MASTIC SEALANTS

### General Purpose Silicone Sealant

Multipurpose silicone sealant that remains permanently flexible. Perfect for general sealing & caulking. Ideal for sealing sheets of glass/metal/plastic to each other. Silicone sealants do not make high tensile bonds so products bedded with them can normally be removed without too much disruption to the substrate.

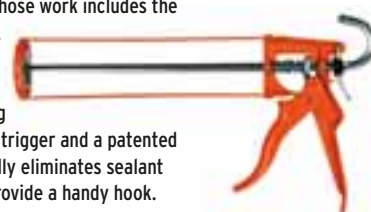


code	Colour	volume	price
ADHGPSCL	Clear	280ml	£5.66
ADHGPSBL	Black	280ml	£5.66
ADHGPSWH	White	280ml	£5.66

## MASTIC GUNS

### Easiflow HD

Flints only stocks top quality Cox mastic guns which will not crumple up when you are halfway through a Sunday fit-up. UK manufacture. A low cost gun for the professional tradesman whose work includes the semifrequent application of sealants. It has been produced continuously since 1971 and differs from imitators by having up to ten times the working life of some models. It has a 7:1 ratio trigger and a patented pressure release device which virtually eliminates sealant "flow-on". The drive rod is bent to provide a handy hook.



code	description	price
ADH303	400 mm [to suit up to 400 ml tubes]	£8.93

### Powerflow Cartridge

An advanced applicator designed for those who use sealants on a daily basis. The die cast trigger is ergonomically contoured for all hand sizes providing comfortable operation over long periods. The 12:1 ratio permits very smooth sealant flow for a high quality finish. A good choice for deck caulking.



code	description	price
ADH304	400 mm [to suit up to 400 ml tubes]	£22.56

## PROP SKIN ADHESIVES

### UHU and UHU Gel

Strong crystal-clear adhesives suitable for virtually everything except expanded polystyrene. Traditionally used in building set models, the UHU gel is a non-drip version which many find cleaner and easier to use.



code	description	volume	price
UHU042862	UHU All Purpose	35ml	£2.83
UHU043437	UHU Extra Gel	31ml	£2.83

### Araldite® Standard

Supplied in a syringe, this is a strong solvent-free adhesive suitable for all materials and ideal for durable bonding and repairs. Perfect for complicated jobs which require adjustment thanks to a long working time. It will bond metals, wood, pottery, glass, and most hard plastics.



code	description	volume	price	12+
ADH154	Standard Syringe	24ml	£7.45	£6.70

### Araldite® Rapid

A rapid fixing two-part epoxy adhesive. Supplied in an easy to use syringe dispenser.



code	description	volume	price	12+
ADH153	Rapid Syringe	24ml	£7.73	£6.95

### Zap a Gap

Fills Gaps. Allows 7 - 10 seconds for positioning and cures in 20 seconds. Can be accelerated by using the aerosol [Kicker]. Bonds most materials including metal, wood, rubber, pottery, and most plastics. The aerosol [Kicker] is an accelerator only, not an adhesive!



code	description	size	price
ADHPT02	Adhesive	1oz	£7.08
ADHPT05	Adhesive	4oz	£24.13
ADHPT15	Aerosol [Kicker]	2oz	£6.55

### Loctite Super Glue

A high performance instant cyanoacrylate glue. Not suitable for glass, polypropylene, polyethylene, and other waxy surfaces.



code	weight	price
ADH100	5g	£3.60

### JB Weld

One of the world's strongest adhesives! You can drill it, grind it and machine it! Always handy for those unexpected breakages. Bonds steel, aluminium, wood, copper, ceramics etc.



code	description	weight	pack qty	price
ADHJB8270	JB Weld Industrial Tube	28.5g	2	£7.50
ADHJB8273	JB Weld Industrial Tube	152g	2	£19.50
ADHJB8276	JB Kwik Weld Tube	28.5g	2	£7.50

### Gorilla Glue

This incredibly strong polyurethane glue can bond pretty much anything including wood, stone, metal, ceramics, glass and foam. It is waterproof and temperature resistant, which means it is ideal for indoor and outdoor projects and repairs.



code	volume	price
ADHGPG0060	60ml	£5.98

### Everbuild Thread Lock

Handy-sized thread sealant (for surprise surprise) locking threads on most nuts, bolts, and screws. Gap filling to 0.25 mm. Can be used on "as received" greasy nuts + bolts.



code	weight	price
ADHETL10	10g	£2.95

### Bostik All Purpose

Sticks card, fabric, wood, metal, pottery, and most plastics. Not suitable for polystyrene, polypropylene, rayon or acetate. So not quite all purpose after all.



code	description	volume	price
ADH114	Handy Size	20ml	£2.16

### Everbuild High Viscosity Super Glue

This higher viscosity super glue is easier to apply than standard super glue which can be a little runny. Suitable for use on most surfaces including non-porous surfaces like glass, metals, and PVCu. Sets in 10-30 seconds.



code	weight	price
ADHEVBHV50	50g	£3.95

## SPECIALIST COSTUME ADHESIVES

### E6000+ & E6000+ Spray

We first heard about this adhesive through the rather excellent Costume Networking group on Facebook [if you work in costume or wardrobe, we highly recommend you check it out - it's a mine of information!] and we quickly realised we needed to try it out for ourselves. Gary tested it out for us, and found it to be just the ticket - easy to use, didn't run on a vertical surface, adhered well to hard plastics, glass, metal, expanded polystyrene, fabrics (and remains flexible), can be put through a washer or dryer. The spray worked really well on wallpaper, and a hem! We can see this could be extremely useful for model-makers too, as can be applied to painted surfaces without having nasty solvents dissolve the paints. How did we live without it? Odourless too. Popular for sticking gems onto costumes. We stock this clear version as both a tube with nozzle applicator and a spray bottle.



code	description	volume	price
ADHECL679	Tube	56.1ml	£9.95
ADHECL023	Spray	236.5ml	£8.85